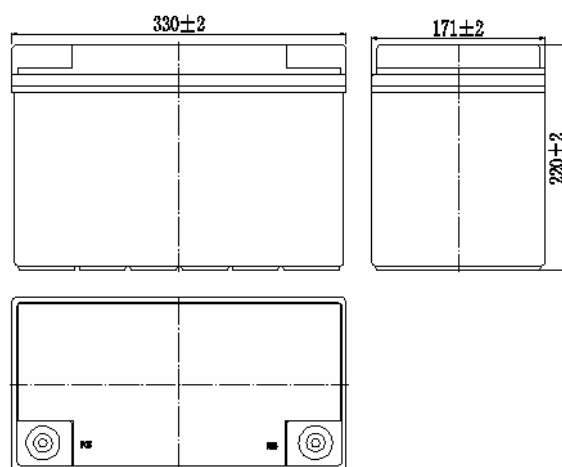


**Specifications**

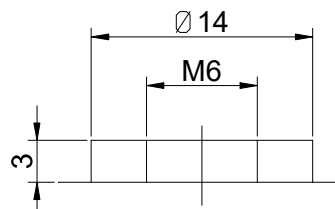
Nominal Voltage		12 V
Capacity (25°C)	20HR(10.5V)	100 Ah
	5HR(10.2V)	78Ah
	1HR(9.6V)	58.2Ah
Dimension	Length	330 ± 2mm (12.99inch)
	Width	171 ± 2mm (6.73inch)
	Height	214 ± 2mm (8.43inch)
	Total Height	220 ± 2mm (8.66inch)
Approx. Weight		32kg (70.4lbs) ± 4%
Terminal type		T9
Internal resistance (Fully charged, 25°C)		Approx. 5m Ω
Capacity affected by temperature (10HR)	40°C	103%
	25°C	100%
	0°C	88%
	-15°C	70%
Self-discharge (25°C)	3 month	Remaining Capacity: 94%
	6 month	Remaining Capacity: 88%
	12 month	Remaining Capacity: 75%
Nominal operating temperature		25°C ± 3°C (77°F ± 5°F)
Operating temperature range	Discharge	-15°C ~ 55°C (5°F ~ 131°F)
	Charge	-10°C ~ 55°C (14°F ~ 131°F)
	Storage	-20°C ~ 55°C (-4°F ~ 131°F)
Float charging voltage(25°C)		13.50 to 13.80V Temperature compensation: -18mV/°C
Cyclic charging voltage(25°C)		14.10 to 14.40V Temperature compensation: -30mV/°C
Maximum charging current		20A
Terminal material		Copper
Maximum discharge current		800A(5 sec.)
Designed floating life(20°C)		15 years



**Dimensions**



**Terminal**



Terminal T9

- ◆ Gelled electrolyte technology;
- ◆ PVC separator;
- ◆ Recognized by UL & CE;
- ◆ ABS container.

**Constant Current Discharge Characteristics (A, 25°C)**

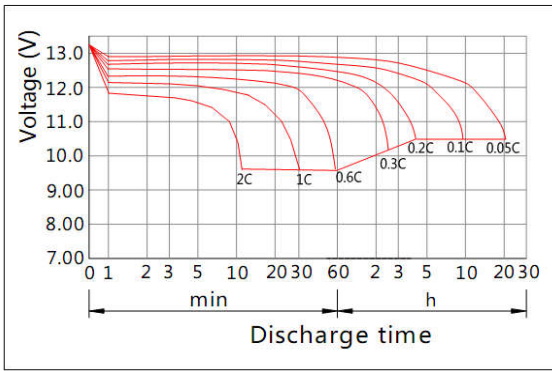
F.V/TIME	15min	30min	60min	2h	3h	4h	5h	6h	8h	10h	20h	48h	120h
9.60V	135	93.2	58.2	34.0	24.0	18.9	15.8	13.5	10.5	9.37	5.11	---	---
9.90V	132	91.3	57.3	33.8	23.8	18.8	15.7	13.4	10.4	9.35	5.10	----	---
10.2V	127	88.5	55.9	33.5	23.7	18.6	15.6	13.3	10.4	9.32	5.06	2.23	---
10.5V	123	86.4	54.8	33.0	23.5	18.5	15.5	13.2	10.3	9.26	5.00	2.22	0.92
10.8V	116	83.2	53.1	32.2	22.8	17.9	15.0	12.8	9.99	9.20	5.00	2.22	0.92

**Constant Power Discharge Characteristics (Watt, 25°C)**

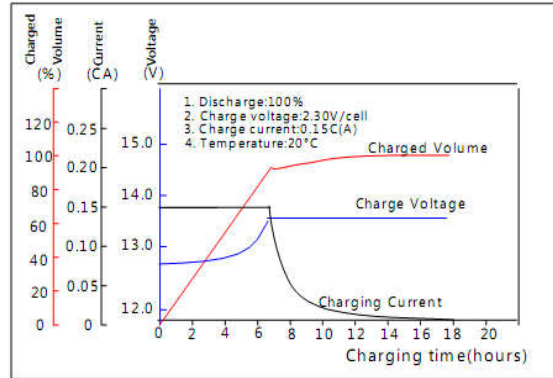
F.V/TIME	15min	30min	60min	2h	3h	4h	5h	6h	8h	10h	20h	48h	120h
9.60V	1507	1062	670	396	283	223	188	160	125	112	61.6	---	---
9.90V	1470	1041	660	393	282	222	187	159	125	112	61.5	---	----
10.2V	1416	1009	644	390	280	220	185	158	124	112	61.3	26.8	----
10.5V	1368	985	631	384	278	219	184	157	123	111	60.3	26.6	11.1
10.8V	1296	949	611	374	269	212	179	152	119	110	60.5	26.6	11.0

Note: The above characteristics data can be obtained within three charge/discharge cycles.

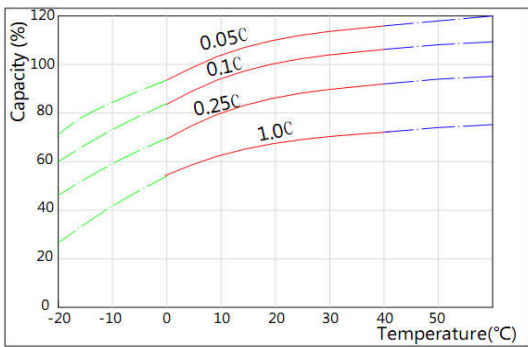
Discharge Characteristics(25°C)



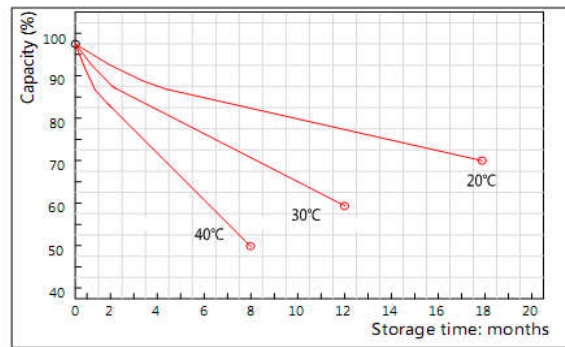
Charging Characteristics(25°C)



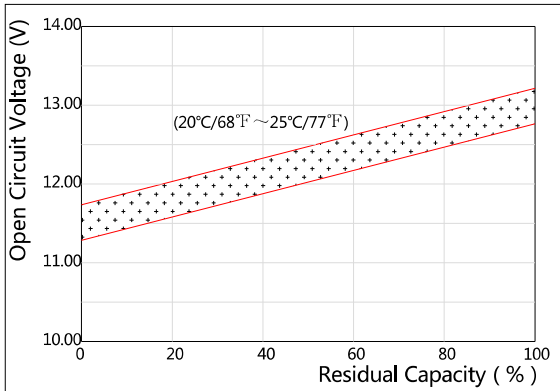
Effect of Temperature on Capacity



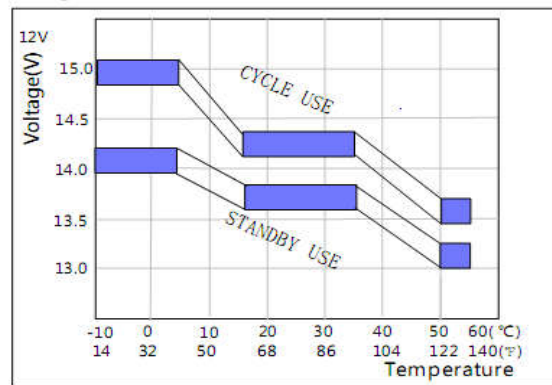
Self-discharge Characteristics



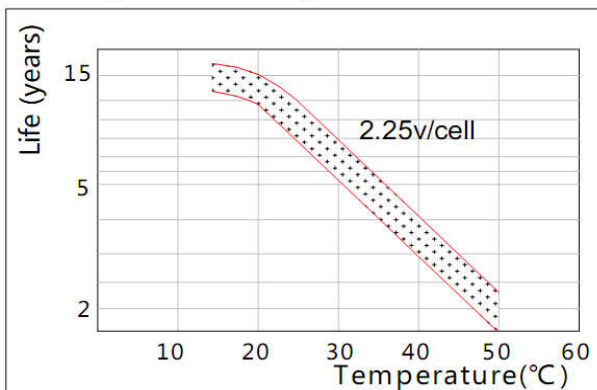
The Relationship for Open Circuit Voltage and Residual Capacity (25°C)



The Relationship for Charging Voltage and Temperature



Floating Life on Temperature



Cycle Life on D.O.D(25°C)

