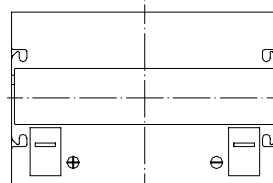
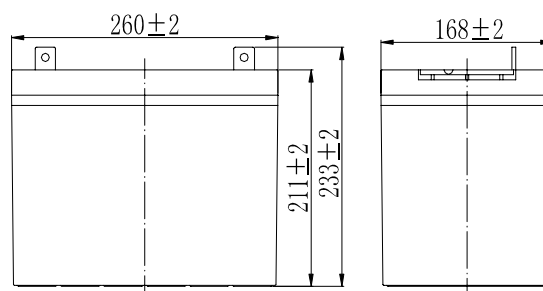


Specifications

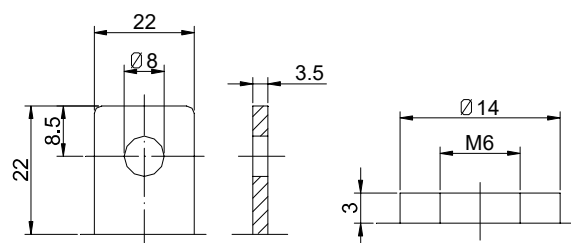
Nominal Voltage		12 V
Capacity (25°C)	10HR(10.8V)	75 Ah
	5HR(10.5V)	65Ah
	1HR(9.60V)	46.5Ah
Dimension	Length	260mm ± 2 (10.24inch)
	Width	168mm ± 2 (6.61inch)
	Height	211mm ± 2 (8.31inch)
	Total Height	T5: 233 ± 2mm (9.17inch) T9: 214 ± 2mm (8.43inch)
Approx. Weight		22.5kg (49.6lbs) ± 4%
Terminal type		T5/T9
Internal resistance (Fully charged, 25°C)		Approx. 6m Ω
Capacity affected by temperature (10HR)	40°C	102%
	25°C	100%
	0°C	85%
	-15°C	65%
Self-discharge (25°C)	3 month	Remaining Capacity: 91%
	6 month	Remaining Capacity: 82%
	12 month	Remaining Capacity: 65%
Nominal operating temperature		25°C ± 3°C (77°F ± 5°F)
Operating temperature range	Discharge	-15°C ~ 50°C (5°F ~ 122°F)
	Charge	-10°C ~ 50°C (14°F ~ 122°F)
	Storage	-20°C ~ 50°C (-4°F ~ 122°F)
Float charging voltage(25°C)		13.50 to 13.80V Temperature compensation: -18mV/°C
Cyclic charging voltage(25°C)		14.50 to 14.90V Temperature compensation: -30mV/°C
Maximum charging current		22.5A
Terminal material		Copper
Maximum discharge current		750A (5 sec.)
Designed floating life(20°C)		12 years



Dimensions



Terminal



Terminal T5

Terminal T9

- ◆ Absorbent glass mat technology;
- ◆ Recognized by UL & CE;
- ◆ ABS container.

Constant Current Discharge Characteristics (A, 25°C)

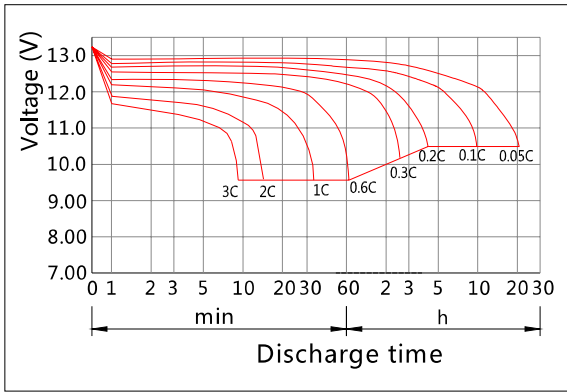
F.V/TIME	10min	15min	30min	60min	2h	3h	4h	5h	8h	10h	20h
9.60V	158	124	75.0	46.5	27.4	19.1	15.7	13.4	9.18	7.64	4.01
9.90V	153	121	73.5	45.8	27.2	19.0	15.6	13.3	9.13	7.62	4.00
10.2V	146	116	71.3	44.6	27.0	18.9	15.5	13.2	9.06	7.60	3.99
10.5V	140	112	69.5	43.8	26.6	18.8	15.4	13.1	9.00	7.55	3.97
10.8V	132	106	67.0	42.4	25.9	18.2	14.9	12.7	8.73	7.50	3.94

Constant Power Discharge Characteristics (Watt, 25°C)

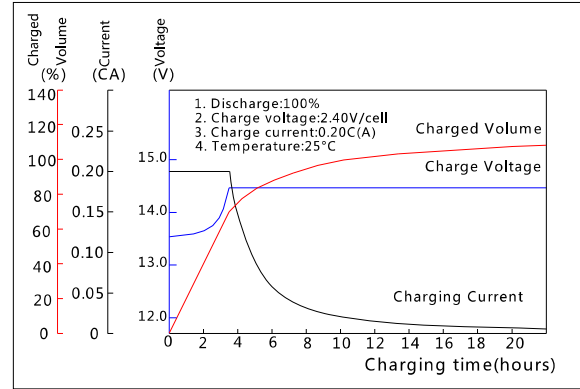
F.V/TIME	10min	15min	30min	60min	2h	3h	4h	5h	8h	10h	20h
9.60V	1701	1359	842	530	317	225	184	158	109	91.2	48.1
9.90V	1650	1326	825	522	315	224	183	157	108	91.0	48.0
10.2V	1582	1277	799	509	313	222	182	156	108	90.7	47.9
10.5V	1514	1234	780	499	308	221	181	155	107	90.2	47.6
10.8V	1429	1169	751	483	300	214	175	150	104	89.6	47.3

Note: The above characteristics data can be obtained within three charge/discharge cycles.

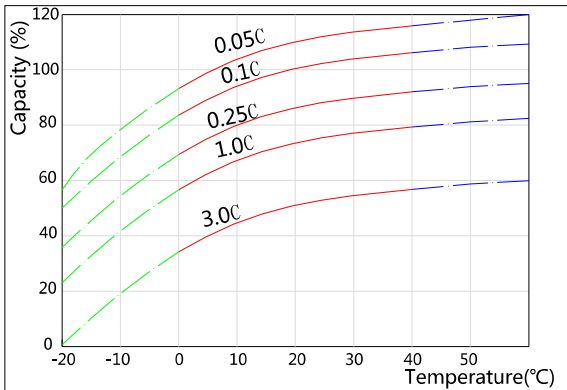
Discharge Characteristics(25°C)



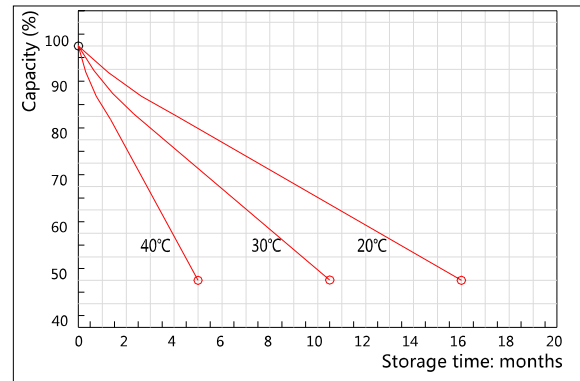
Charging Characteristics(25°C)



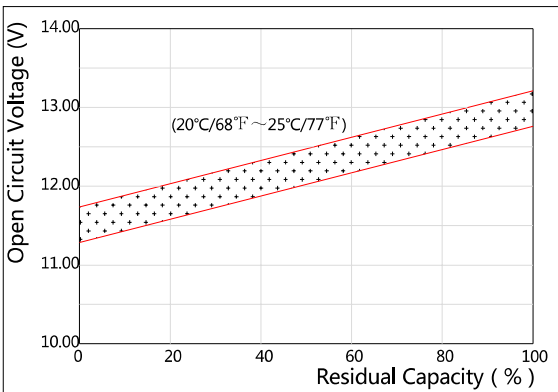
Effect of Temperature on Capacity



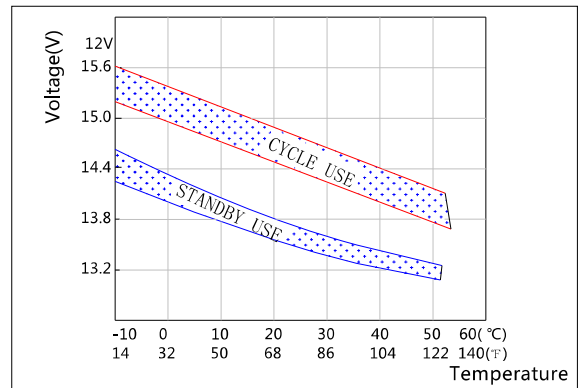
Self-discharge Characteristics



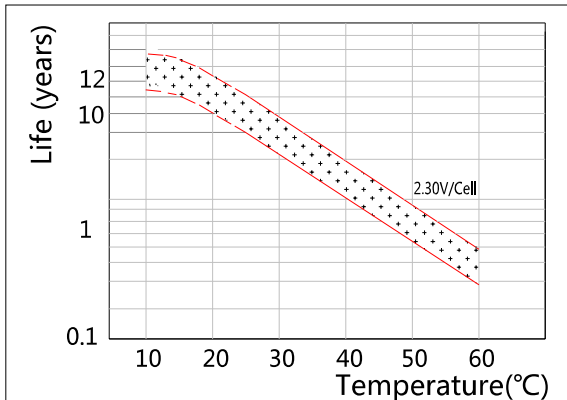
The Relationship for Open Circuit Voltage and Residual Capacity (25°C)



The Relationship for Charging Voltage and Temperature



Floating Life on Temperature



Cycle Life on D.O.D(25°C)

