

**Specifications**

Nominal Voltage		12 V
Capacity (25°C)	10HR(10.8V)	160 Ah
	5HR(10.5V)	140Ah
	1HR(9.60V)	99Ah
Dimension	Length	428.5 ± 2mm (16.87inch)
	Width	177 ± 2mm (6.97inch)
	Height	258 ± 2mm (10.16inch)
	Total Height	258 ± 2mm (10.16inch)
Approx. Weight		49.5kg (109.1lbs) ± 4%
Terminal type		M6 Bolt
Internal resistance (Fully charged, 25°C)		Approx. 4.2m Ω
Capacity affected by temperature (10HR)	40°C	102%
	25°C	100%
	0°C	85%
	-15°C	65%
Self-discharge (25°C)	3 month	Remaining Capacity: 91%
	6 month	Remaining Capacity: 82%
	12 month	Remaining Capacity: 65%
Nominal operating temperature		25°C ± 3°C (77°F ± 5°F)
Operating temperature range	Discharge	-15°C ~ 50°C (5°F ~ 122°F)
	Charge	-10°C ~ 50°C (14°F ~ 122°F)
	Storage	-20°C ~ 50°C (-4°F ~ 122°F)
Float charging voltage(25°C)		13.50 to 13.80V Temperature compensation: -18mV/°C
Cyclic charging voltage(25°C)		14.50 to 14.90V Temperature compensation: -30mV/°C
Maximum charging current		48A
Terminal material		Stainless steel
Maximum discharge current		1000A(5 sec.)
Designed floating life(20°C)		12 years

- ◆ Absorbent glass mat technology;
- ◆ Recognized by UL & CE;
- ◆ ABS container.

**Constant Current Discharge Characteristics (A, 25°C)**

F.V/TIME	15min	30min	60min	2h	3h	4h	5h	6h	8h	10h	20h
9.60V	264	160	99.2	58.5	40.8	33.5	28.6	25.0	19.6	16.3	8.55
9.90V	258	157	97.7	58.1	40.6	33.3	28.4	24.8	19.5	16.3	8.53
10.2V	248	152	95.2	57.6	40.3	33.0	28.2	24.7	19.3	16.2	8.51
10.5V	240	148	93.3	56.7	40.0	32.8	28.0	24.5	19.2	16.1	8.46
10.8V	227	143	90.5	55.3	38.8	31.8	27.2	23.7	18.6	16.0	8.40

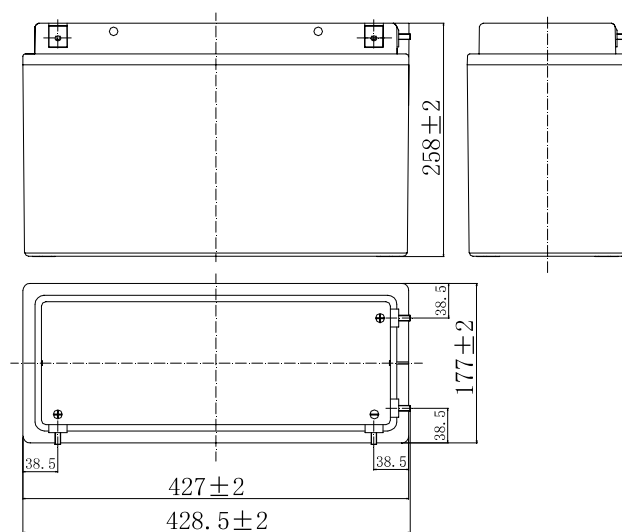
**Constant Power Discharge Characteristics (Watt, 25°C)**

F.V/TIME	15min	30min	60min	2h	3h	4h	5h	6h	8h	10h	20h
9.60V	2899	1795	1131	677	480	393	338	295	233	194	103
9.90V	2829	1759	1114	673	477	391	336	293	231	194	102
10.2V	2725	1705	1086	667	474	388	333	291	230	194	102
10.5V	2632	1664	1064	657	470	386	331	289	228	192	102
10.8V	2493	1603	1031	640	456	374	321	281	221	191	101

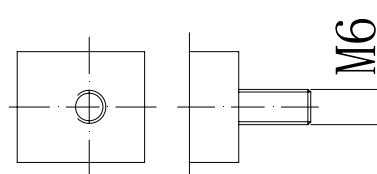
Note: The above characteristics data can be obtained within three charge/discharge cycles.



**Dimensions**

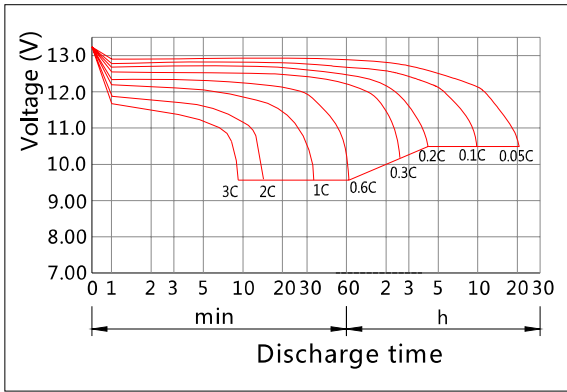


**Terminal**

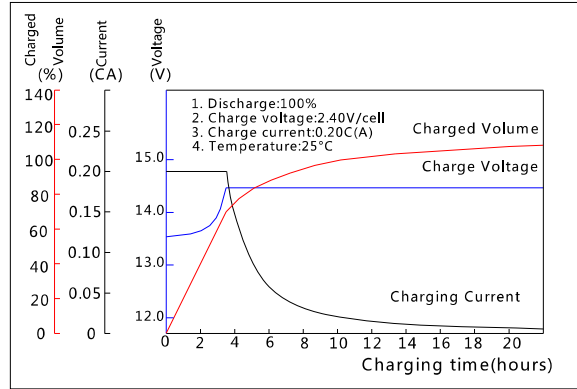


**Terminal**

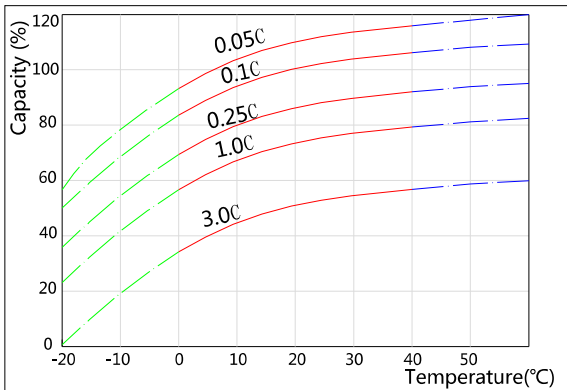
**Discharge Characteristics(25°C)**



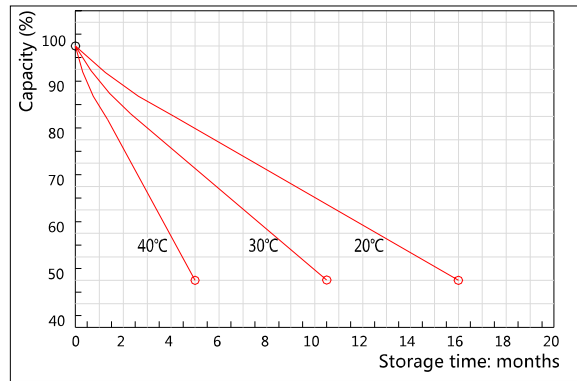
**Charging Characteristics(25°C)**



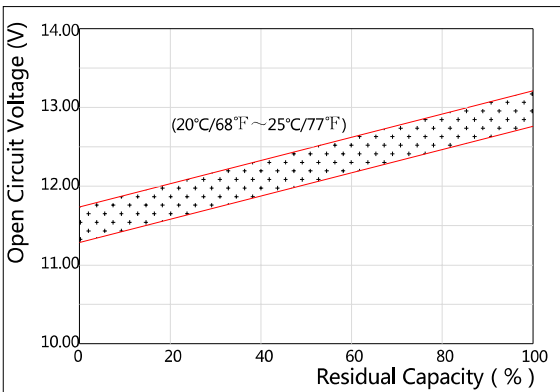
**Effect of Temperature on Capacity**



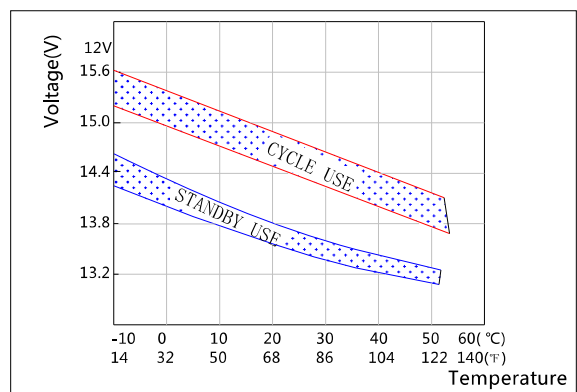
**Self-discharge Characteristics**



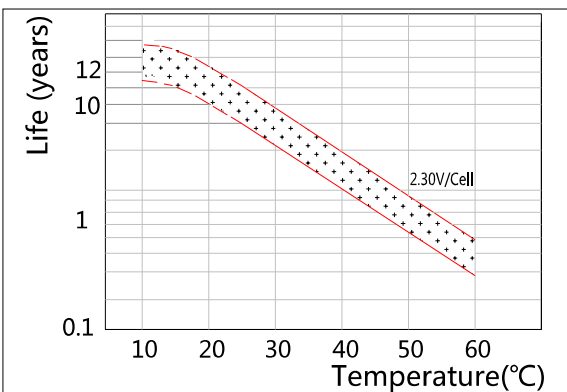
**The Relationship for Open Circuit Voltage and Residual Capacity (25°C)**



**The Relationship for Charging Voltage and Temperature**



**Floating Life on Temperature**



**Cycle Life on D.O.D(25°C)**

