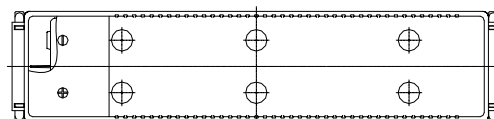
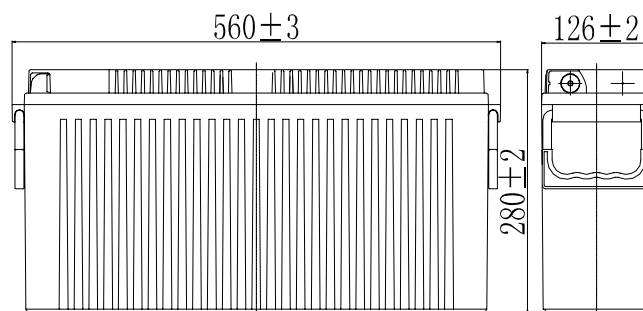


Specifications

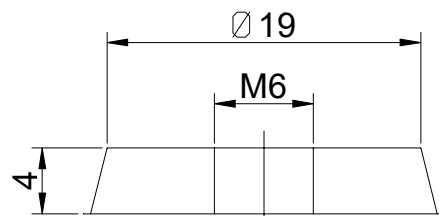
Nominal Voltage		12 V
Capacity (25°C)	10HR(10.8V)	155 Ah
	5HR(10.5V)	135Ah
	1HR(9.60V)	96Ah
Dimension	Length	560 ± 3mm (22.05inch)
	Width	126 ± 2mm (4.96inch)
	Height	280 ± 2mm (11.02inch)
	Total Height	280 ± 2mm (11.02inch)
Approx. Weight		49kg (108lbs) ± 4%
Internal resistance (Fully charged, 25°C)		Approx. 4m Ω
Capacity affected by temperature (10HR)	40°C	102%
	25°C	100%
	0°C	85%
	-15°C	65%
Self-discharge (25°C)	3 month	Remaining Capacity: 91%
	6 month	Remaining Capacity: 82%
	12 month	Remaining Capacity: 65%
Nominal operating temperature		25°C ± 3°C (77°F ± 5°F)
Operating temperature range	Discharge	-15°C ~ 50°C (5°F ~ 122°F)
	Charge	-10°C ~ 50°C (14°F ~ 122°F)
	Storage	-20°C ~ 50°C (-4°F ~ 122°F)
Float charging voltage(25°C)	13.50 to 13.80V Temperature compensation: -18mV/°C	
Cyclic charging voltage(25°C)	14.50 to 14.90V Temperature compensation: -30mV/°C	
Maximum charging current	46.5A	
Terminal material	Copper	
Maximum discharge current	1200A(5 sec.)	
Designed floating life(20°C)	10 years	



Dimensions



Terminal



- ◆ Absorbent glass mat technology;
- ◆ Recognized by UL & CE;
- ◆ ABS container.

Constant Current Discharge Characteristics (A, 25°C)

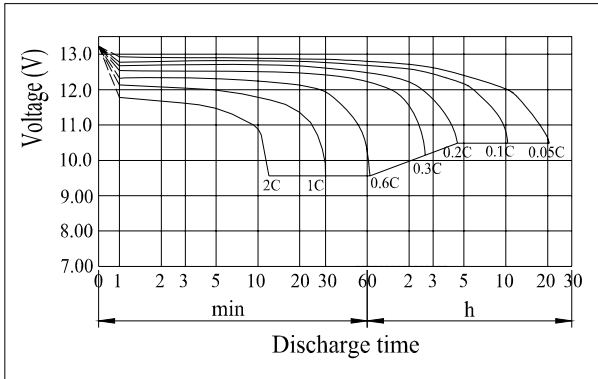
F.V/TIME	15min	30min	60min	2h	3h	4h	5h	6h	8h	10h	20h
9.60V	251	152	96.1	56.6	39.5	32.4	27.7	24.2	19.0	15.8	8.28
9.90V	245	149	94.7	56.3	39.3	32.2	27.5	24.0	18.9	15.7	8.27
10.2V	236	144	92.3	55.8	39.0	32.0	27.3	23.9	18.7	15.7	8.24
10.5V	228	141	90.4	55.0	38.8	31.8	27.1	23.7	18.6	15.6	8.19
10.8V	216	136	87.6	53.6	37.6	30.8	26.3	23.0	18.0	15.5	8.14

Constant Power Discharge Characteristics (Watt, 25°C)

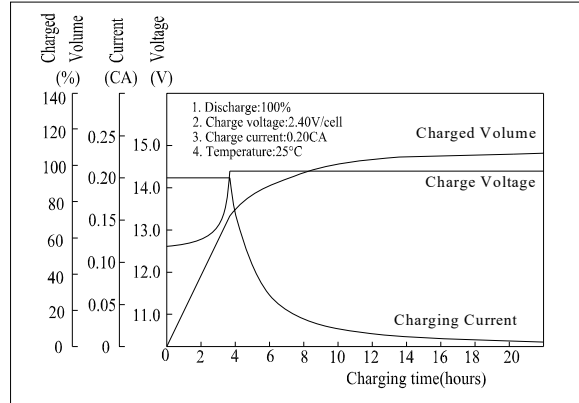
F.V/TIME	15min	30min	60min	2h	3h	4h	5h	6h	8h	10h	20h
9.60V	2752	1704	1096	656	465	381	327	286	225	188	99.4
9.90V	2686	1670	1079	652	462	379	325	284	224	188	99.2
10.2V	2587	1619	1052	646	459	376	323	282	223	187	98.9
10.5V	2499	1580	1031	636	456	374	321	280	221	186	98.3
10.8V	2367	1522	999	620	442	362	311	272	214	185	97.7

Note: The above characteristics data can be obtained within three charge/discharge cycles.

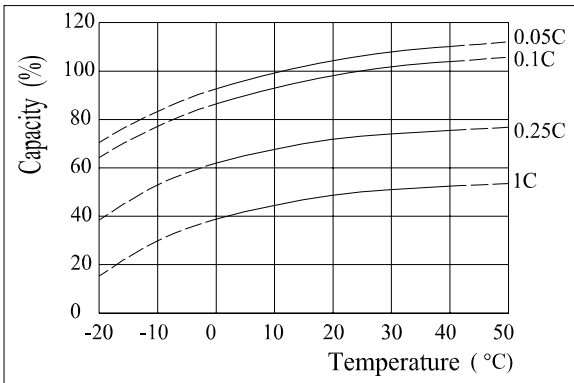
Discharge Characteristics(25°C)



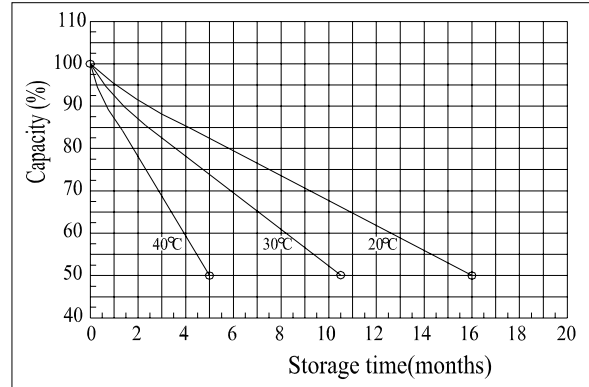
Charging Characteristics(25°C)



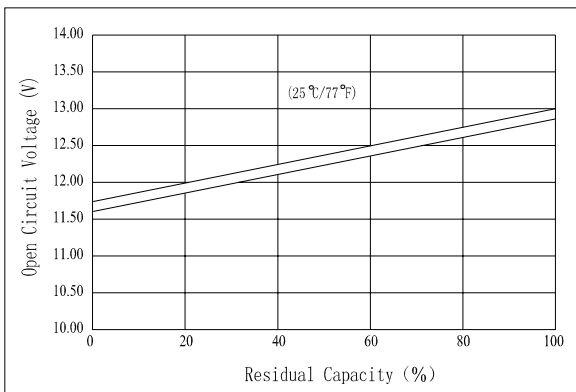
Effect of Temperature on Capacity



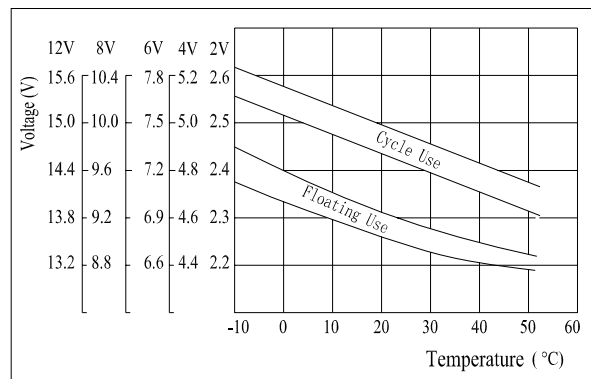
Self-discharge Characteristics



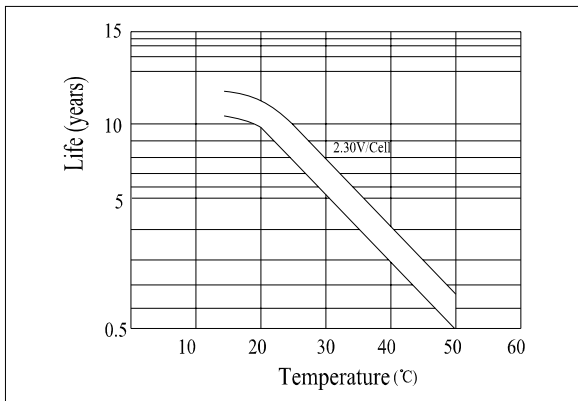
The Relationship for Open Circuit Voltage and Residual Capacity (25°C)



The Relationship for Charging Voltage and Temperature



Floating Life on Temperature



Cycle Life on D.O.D(25°C)

