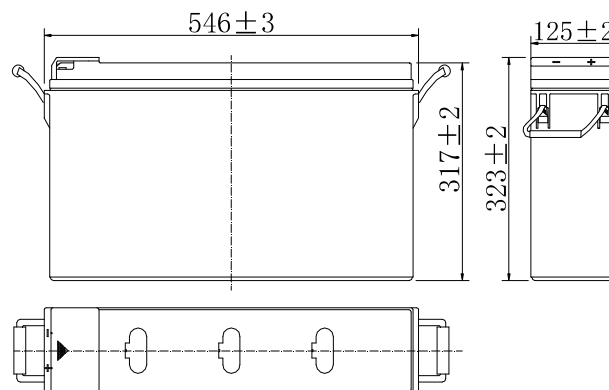


**Specifications**

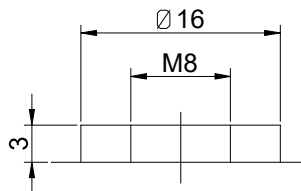
Nominal Voltage		12 V
Capacity (25°C)	10HR(10.8V)	150 Ah
	5HR(10.5V)	131.5Ah
	1HR(9.60V)	92.6 Ah
Dimension	Length	546 ± 3mm (21.50inch)
	Width	125 ± 2mm (4.92inch)
	Height	317 ± 2mm (12.48inch)
	Total Height	323 ± 2mm (12.72inch)
Approx. Weight		49kg (107.8lbs) ± 4%
Terminal type		T11
Internal resistance (Fully charged, 25°C)		Approx. 4.5m Ω
Capacity affected by temperature (10HR)	40°C	102%
	25°C	100%
	0°C	85%
	-15°C	65%
Self-discharge (25°C)	3 month	Remaining Capacity: 91%
	6 month	Remaining Capacity: 82%
	12 month	Remaining Capacity: 65%
Nominal operating temperature		25°C ± 3°C (77°F ± 5°F)
Operating temperature range	Discharge	-15°C ~ 50°C (5°F ~ 122°F)
	Charge	-10°C ~ 50°C (14°F ~ 122°F)
	Storage	-20°C ~ 50°C (-4°F ~ 122°F)
Float charging voltage(25°C)		13.50 to 13.80V Temperature compensation: -18mV/°C
Cyclic charging voltage(25°C)		14.50 to 14.90V Temperature compensation: -30mV/°C
Maximum charging current		45A
Terminal material		Copper
Maximum discharge current		1250A(5 sec.)
Designed floating life(20°C)		15 years



**Dimensions**



**Terminal**



Terminal T11

- ◆ Absorbent glass mat technology;
- ◆ Recognized by UL & CE;
- ◆ ABS container.

**Constant Current Discharge Characteristics (A, 25°C)**

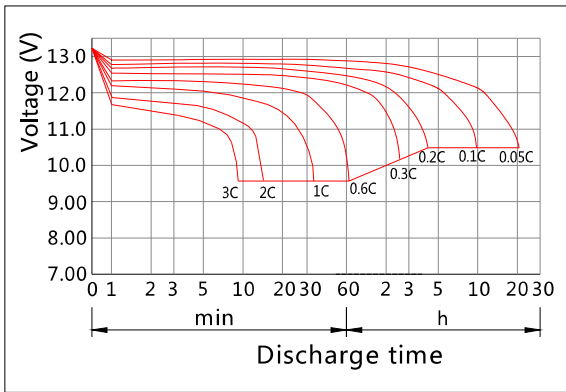
F.V/TIME	15min	30min	60min	2h	3h	4h	5h	6h	8h	10h	20h
9.60V	243	147	92.6	54.8	38.3	31.3	26.7	23.4	18.4	15.3	8.02
9.90V	236	144	91.8	54.5	38.0	31.1	26.6	23.3	18.3	15.3	8.00
10.2V	228	139	89.1	54.0	37.8	31.0	26.5	23.1	18.1	15.2	7.98
10.5V	221	136	87.5	53.2	37.5	30.8	26.3	22.9	18.0	15.1	7.93
10.8V	208	131	84.8	51.9	36.4	29.8	25.5	22.2	17.5	15.0	7.88

**Constant Power Discharge Characteristics (Watt, 25°C)**

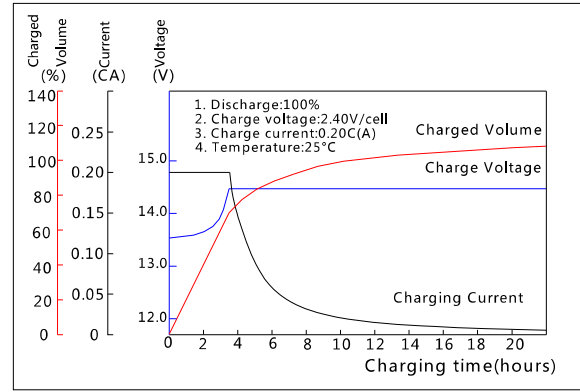
F.V/TIME	15min	30min	60min	2h	3h	4h	5h	6h	8h	10h	20h
9.60V	2663	1649	1061	634	450	369	317	277	218	183	96.2
9.90V	2599	1616	1045	631	447	367	315	275	217	182	96.2
10.2V	2503	1567	1017	626	444	364	312	274	215	182	95.3
10.5V	2419	1529	998	616	441	362	311	271	214	180	95.3
10.8V	2291	1473	967	600	428	351	301	263	207	179	94.4

Note: The above characteristics data can be obtained within three charge/discharge cycles. Page 1 of 2

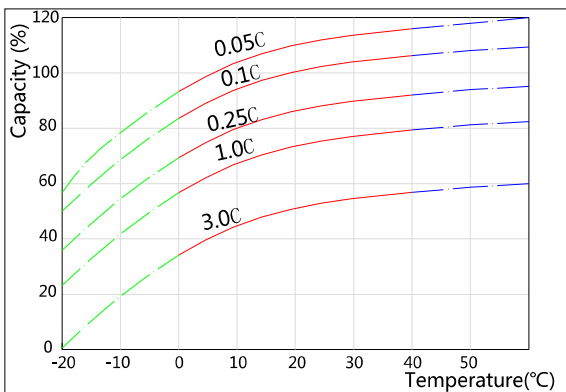
**Discharge Characteristics(25°C)**



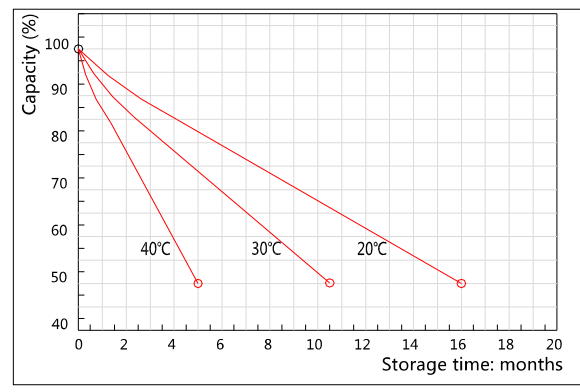
**Charging Characteristics(25°C)**



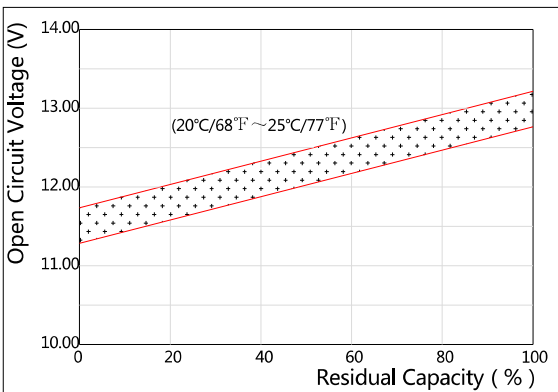
**Effect of Temperature on Capacity**



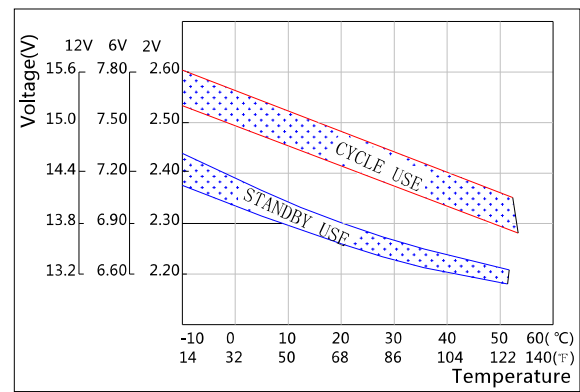
**Self-discharge Characteristics**



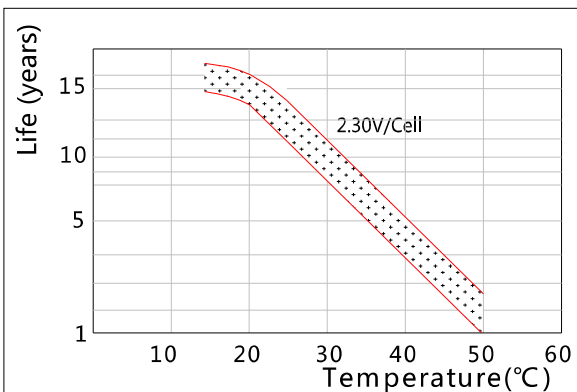
**The Relationship for Open Circuit Voltage and Residual Capacity (25°C)**



**The Relationship for Charging Voltage and Temperature**



**Floating Life on Temperature**



**Cycle Life on D.O.D(25°C)**

