

Specifications

| | | |
|---|--------------|---|
| Nominal Voltage | | 12 V |
| Capacity (25°C) | 10HR(10.8V) | 120 Ah |
| | 5HR(10.5V) | 105Ah |
| | 1HR(9.60V) | 74.4Ah |
| Dimension | Length | 406 ± 2mm (15.98inch) |
| | Width | 173 ± 2mm (6.81inch) |
| | Height | 208 ± 2mm (8.19inch) |
| | Total Height | 238 ± 2mm (9.37inch) |
| Approx. Weight | | 35kg (77.2lbs) ± 4% |
| Terminal type | | T19/T11 |
| Internal resistance (Fully charged, 25°C) | | Approx. 4m Ω |
| Capacity affected by temperature (10HR) | 40°C | 102% |
| | 25°C | 100% |
| | 0°C | 85% |
| | -15°C | 65% |
| Self-discharge (25°C) | 3 month | Remaining Capacity: 91% |
| | 6 month | Remaining Capacity: 82% |
| | 12 month | Remaining Capacity: 65% |
| Nominal operating temperature | | 25°C ± 3°C (77°F ± 5°F) |
| Operating temperature range | Discharge | -15°C ~ 50°C (5°F ~ 122°F) |
| | Charge | -10°C ~ 50°C (14°F ~ 122°F) |
| | Storage | -20°C ~ 50°C (-4°F ~ 122°F) |
| Float charging voltage(25°C) | | 13.50 to 13.80V Temperature compensation: -18mV/°C |
| Cyclic charging voltage(25°C) | | 14.50 to 14.90V Temperature compensation: -30mV/°C |
| Maximum charging current | | 36A |
| Terminal material | | T19: Lead, T11: Copper |
| Maximum discharge current | | 960A(5 sec.) |
| Designed floating life(20°C) | | 12 years |

- ◆ Absorbent glass mat technology;
- ◆ Recognized by UL & CE;
- ◆ ABS container.

Constant Current Discharge Characteristics (A, 25°C)

| F.V/TIME | 15min | 30min | 60min | 2h | 3h | 4h | 5h | 6h | 8h | 10h | 20h |
|----------|-------|-------|-------|------|------|------|------|------|------|------|------|
| 9.60V | 198 | 120 | 74.4 | 43.8 | 30.6 | 25.1 | 21.4 | 18.7 | 14.7 | 12.2 | 6.41 |
| 9.90V | 193 | 118 | 73.3 | 43.6 | 30.4 | 24.9 | 21.3 | 18.6 | 14.6 | 12.2 | 6.40 |
| 10.2V | 186 | 114 | 71.4 | 43.2 | 30.2 | 24.8 | 21.1 | 18.5 | 14.5 | 12.2 | 6.38 |
| 10.5V | 180 | 111 | 70.0 | 42.6 | 30.0 | 24.6 | 21.0 | 18.4 | 14.4 | 12.1 | 6.34 |
| 10.8V | 170 | 107 | 67.9 | 41.5 | 29.1 | 23.9 | 20.4 | 17.8 | 14.0 | 12.0 | 6.30 |

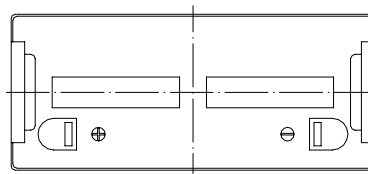
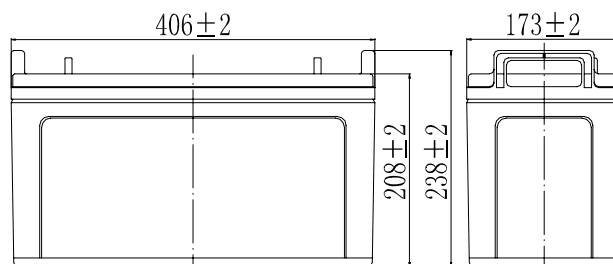
Constant Power Discharge Characteristics (Watt, 25°C)

| F.V/TIME | 15min | 30min | 60min | 2h | 3h | 4h | 5h | 6h | 8h | 10h | 20h |
|----------|-------|-------|-------|-----|-----|-----|-----|-----|-----|-----|------|
| 9.60V | 2174 | 1346 | 848 | 508 | 360 | 295 | 253 | 221 | 174 | 146 | 77.0 |
| 9.90V | 2122 | 1319 | 835 | 505 | 358 | 293 | 252 | 220 | 173 | 146 | 76.8 |
| 10.2V | 2044 | 1279 | 814 | 500 | 355 | 291 | 250 | 219 | 172 | 145 | 76.6 |
| 10.5V | 1974 | 1248 | 798 | 493 | 353 | 289 | 248 | 217 | 171 | 144 | 76.1 |
| 10.8V | 1870 | 1202 | 774 | 480 | 342 | 281 | 241 | 211 | 166 | 143 | 75.6 |

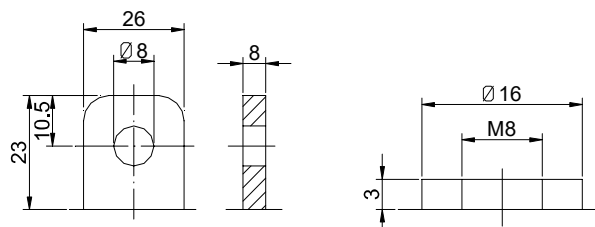
Note: The above characteristics data can be obtained within three charge/discharge cycles.



Dimensions



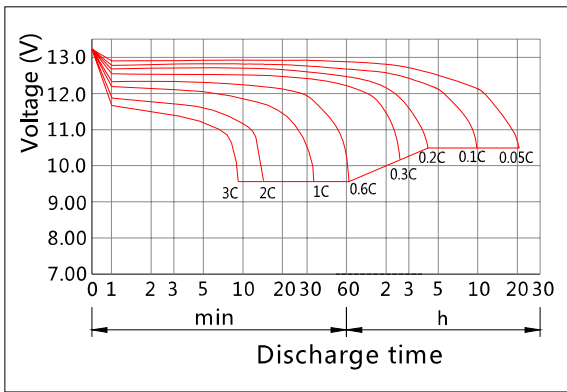
Terminal



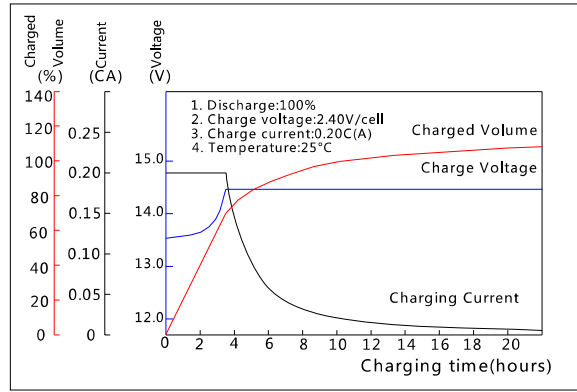
Terminal T19

Terminal T11

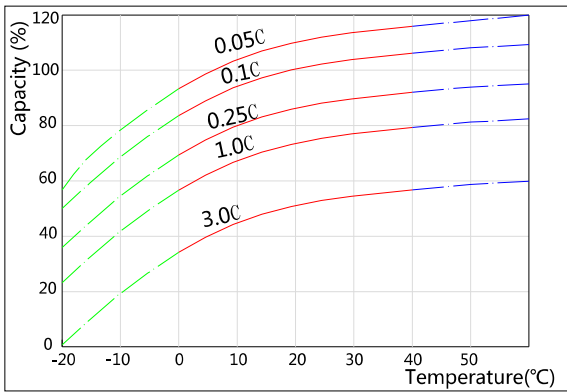
Discharge Characteristics(25°C)



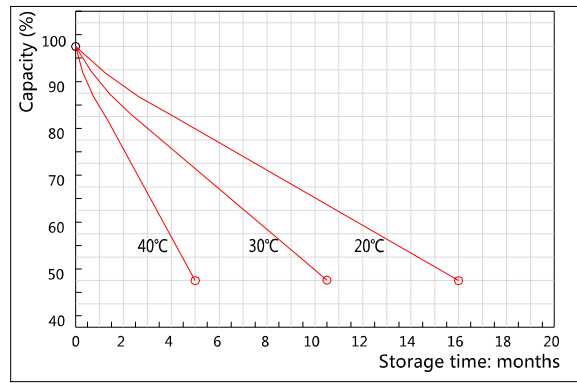
Charging Characteristics(25°C)



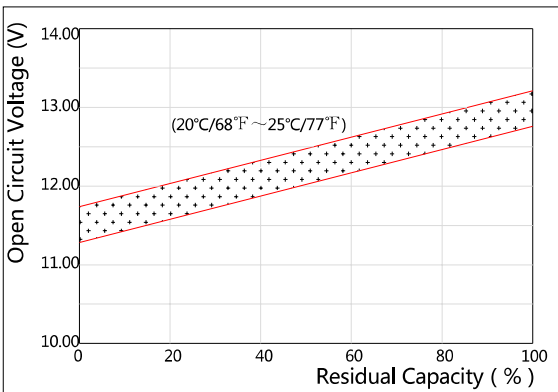
Effect of Temperature on Capacity



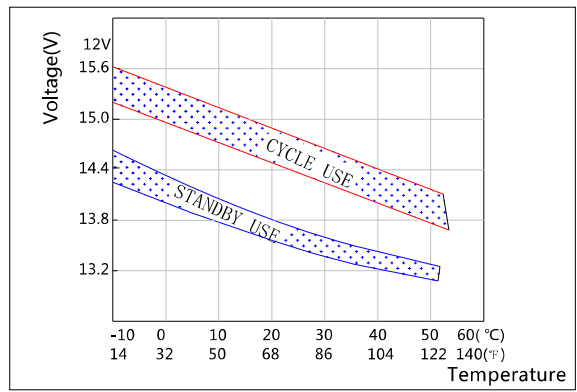
Self-discharge Characteristics



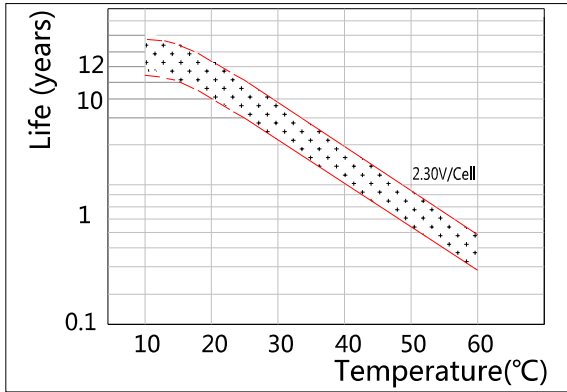
The Relationship for Open Circuit Voltage and Residual Capacity (25°C)



The Relationship for Charging Voltage and Temperature



Floating Life on Temperature



Cycle Life on D.O.D(25°C)

