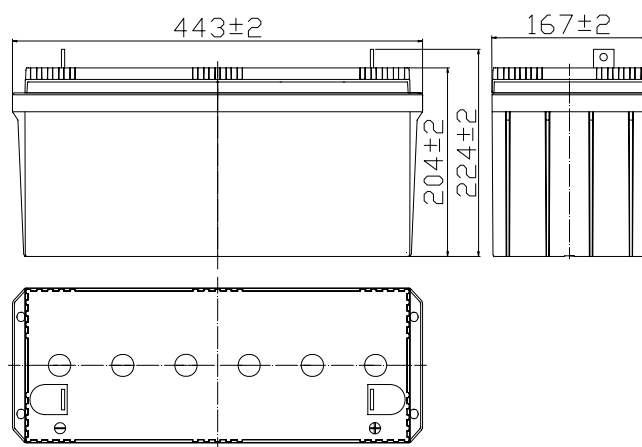


**Specifications**

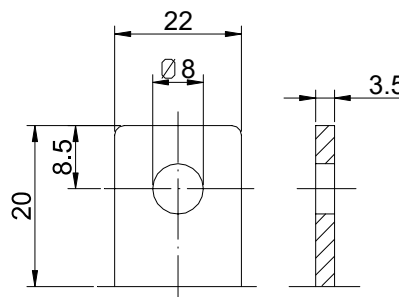
Nominal Voltage		12 V
Capacity (25°C)	10HR(10.8V)	120 Ah
	5HR(10.5V)	105Ah
	1HR(9.60V)	74.4Ah
Dimension	Length	443 ± 2mm (17.44inch)
	Width	167 ± 2mm (6.57inch)
	Height	204 ± 2mm (8.03inch)
	Total Height	224 ± 2mm (8.82inch)
Approx. Weight		35kg (77.2lbs) ± 4%
Terminal type		T5
Internal resistance (Fully charged, 25°C)		Approx. 4m Ω
Capacity affected by temperature (10HR)	40°C	102%
	25°C	100%
	0°C	85%
	-15°C	65%
Self-discharge (25°C)	3 month	Remaining Capacity: 91%
	6 month	Remaining Capacity: 82%
	12 month	Remaining Capacity: 65%
Nominal operating temperature		25°C ± 3°C (77°F ± 5°F)
Operating temperature range	Discharge	-15°C ~ 50°C (5°F ~ 122°F)
	Charge	-10°C ~ 50°C (14°F ~ 122°F)
	Storage	-20°C ~ 50°C (-4°F ~ 122°F)
Float charging voltage(25°C)		13.50 to 13.80V Temperature compensation: -18mV/°C
Cyclic charging voltage(25°C)		14.50 to 14.90V Temperature compensation: -30mV/°C
Maximum charging current		36A
Terminal material		Copper
Maximum discharge current		960A(5 sec.)
Designed floating life(20°C)		12 years



**Dimensions**



**Terminal**



Terminal T5

- ◆ Absorbent glass mat technology;
- ◆ Recognized by UL & CE;
- ◆ ABS container.

**Constant Current Discharge Characteristics (A, 25°C)**

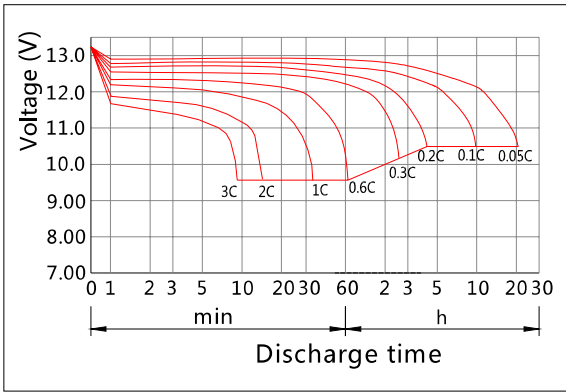
F.V/TIME	15min	30min	60min	2h	3h	4h	5h	6h	8h	10h	20h
9.60V	198	120	74.4	43.8	30.6	25.1	21.4	18.7	14.7	12.2	6.41
9.90V	193	118	73.3	43.6	30.4	24.9	21.3	18.6	14.6	12.2	6.40
10.2V	186	114	71.4	43.2	30.2	24.8	21.1	18.5	14.5	12.2	6.38
10.5V	180	111	70.0	42.6	30.0	24.6	21.0	18.4	14.4	12.1	6.34
10.8V	170	107	67.9	41.5	29.1	23.9	20.4	17.8	14.0	12.0	6.30

**Constant Power Discharge Characteristics (Watt, 25°C)**

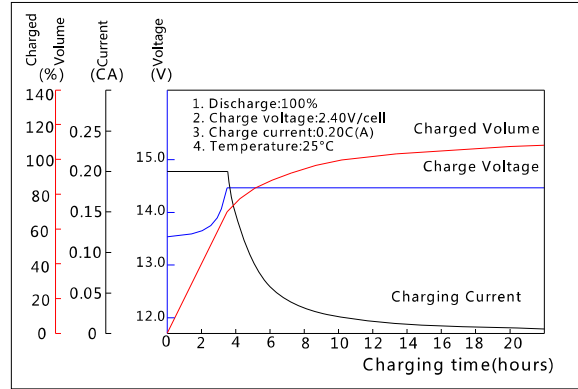
F.V/TIME	15min	30min	60min	2h	3h	4h	5h	6h	8h	10h	20h
9.60V	2174	1346	848	508	360	295	253	221	174	146	77.0
9.90V	2122	1319	835	505	358	293	252	220	173	146	76.8
10.2V	2044	1279	814	500	355	291	250	219	172	145	76.6
10.5V	1974	1248	798	493	353	289	248	217	171	144	76.1
10.8V	1870	1202	774	480	342	281	241	211	166	143	75.6

Note: The above characteristics data can be obtained within three charge/discharge cycles.

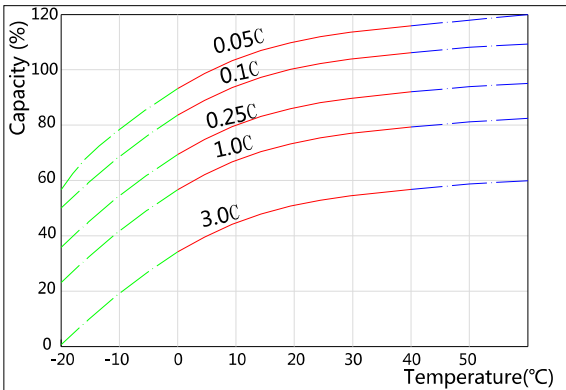
**Discharge Characteristics(25°C)**



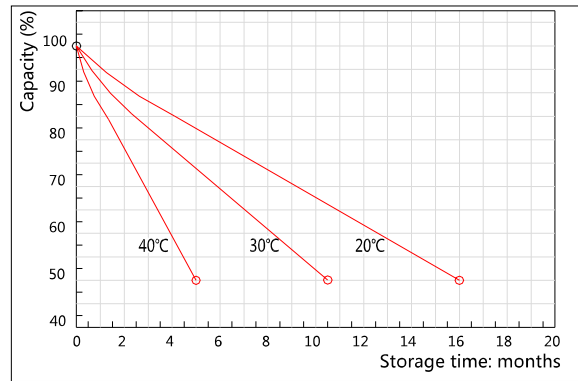
**Charging Characteristics(25°C)**



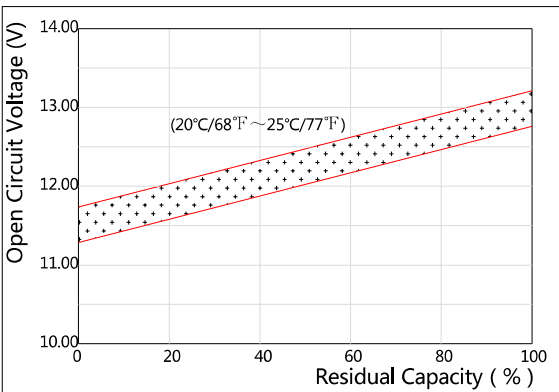
**Effect of Temperature on Capacity**



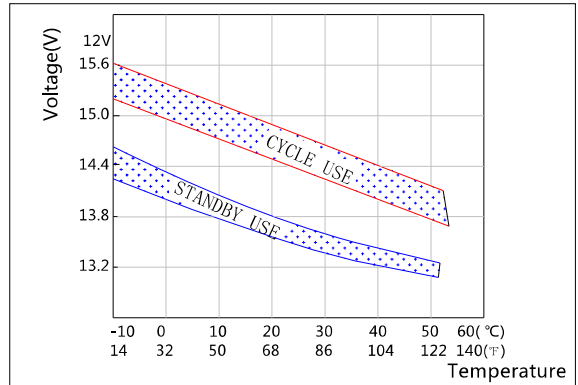
**Self-discharge Characteristics**



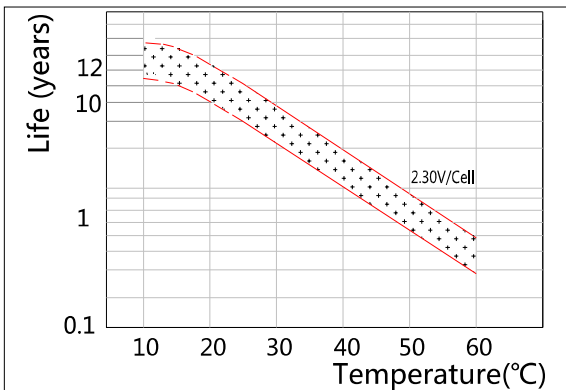
**The Relationship for Open Circuit Voltage and Residual Capacity (25°C)**



**The Relationship for Charging Voltage and Temperature**



**Floating Life on Temperature**



**Cycle Life on D.O.D(25°C)**

