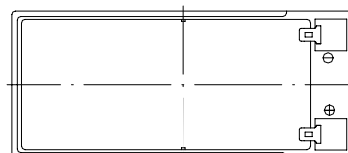
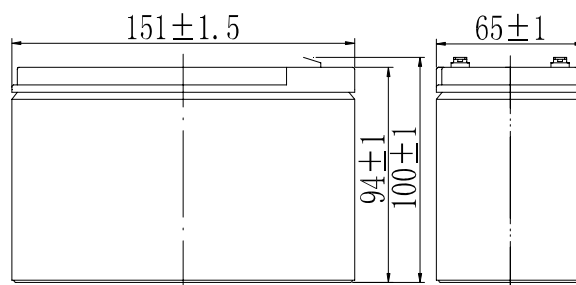


Specifications

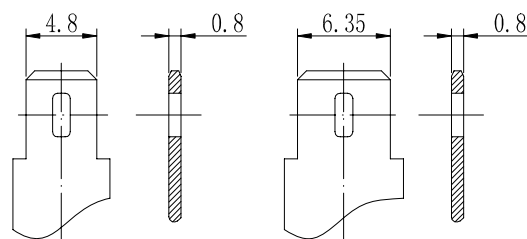
Nominal Voltage		12 V
Capacity (25°C)	20HR(10.5V)	8.5Ah
	10HR(10.5V)	7.9Ah
	1HR(9.60V)	5.53Ah
Dimension	Length	151 ± 1.5mm (5.94inch)
	Width	65 ± 1mm (2.56inch)
	Height	94 ± 1mm (3.70inch)
	Total Height	100 ± 1mm (3.94inch)
Approx. Weight		2.45kg (5.40lbs) ± 5%
Terminal type		T1/T2
Internal resistance (Fully charged, 25°C)		Approx. 20mΩ
Capacity affected by temperature (20HR)	40°C	102%
	25°C	100%
	0°C	85%
	-15°C	65%
Self-discharge (25°C)	3 month	Remaining Capacity: 91%
	6 month	Remaining Capacity: 82%
	12 month	Remaining Capacity: 65%
Nominal operating temperature		25°C ± 3°C (77°F ± 5°F)
Operating temperature range	Discharge	-15°C ~ 50°C (5°F ~ 122°F)
	Charge	-10°C ~ 50°C (14°F ~ 122°F)
	Storage	-20°C ~ 50°C (-4°F ~ 122°F)
Float charging voltage(25°C)		13.60 to 13.80V Temperature compensation: -18mV/°C
Cyclic charging voltage(25°C)		14.50 to 14.90V Temperature compensation: -30mV/°C
Maximum charging current		2.55A
Terminal material		Copper
Maximum discharge current		127.5A (5 sec.)
Designed floating life(20°C)		10years



Dimensions



Terminal



Terminal T1

Terminal T2

- ◆ Absorbent glass mat technology;
- ◆ Recognized by UL & CE;
- ◆ ABS container.

Constant Current Discharge Characteristics (A, 25°C)

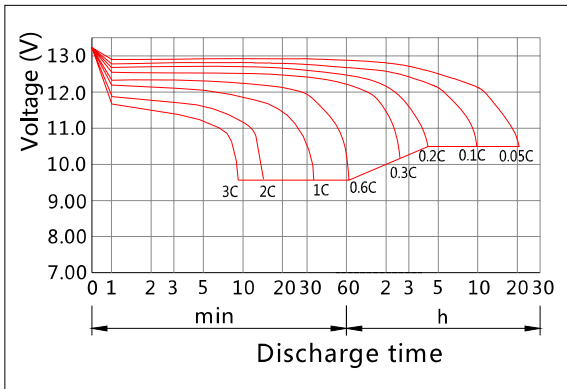
F.V/TIME	5min	10min	15min	30min	60min	2h	3h	4h	5h	10h	20h
9.60V	32.3	20.4	16.2	9.01	5.53	3.02	2.17	1.73	1.47	0.80	0.431
9.90V	31.3	19.8	15.8	8.83	5.44	3.00	2.15	1.72	1.47	0.80	0.430
10.2V	30.0	19.0	15.2	8.56	5.30	2.98	2.14	1.71	1.46	0.80	0.428
10.5V	28.7	18.2	14.7	8.35	5.20	2.93	2.13	1.70	1.45	0.79	0.425
10.8V	27.1	17.1	13.9	8.05	5.04	2.86	2.06	1.65	1.40	0.77	0.417

Constant Power Discharge Characteristics (Watt, 25°C)

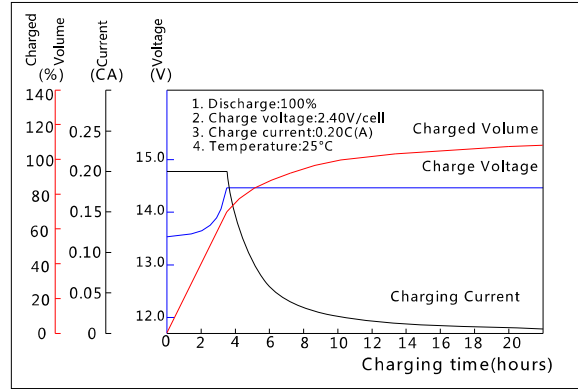
F.V/TIME	5min	10min	15min	30min	60min	2h	3h	4h	5h	10h	20h
9.60V	360	230	184	103	64.0	35.3	25.7	20.7	17.6	9.63	5.18
9.90V	350	223	180	101	63.0	35.1	25.6	20.5	17.5	9.59	5.16
10.2V	335	214	173	98.1	61.4	34.8	25.4	20.4	17.4	9.54	5.13
10.5V	321	205	167	95.7	60.2	34.3	25.2	20.2	17.3	9.49	5.10
10.8V	303	193	158	92.2	58.3	33.4	24.5	19.6	16.7	9.30	5.00

Note: The above characteristics data can be obtained within three charge/discharge cycles.

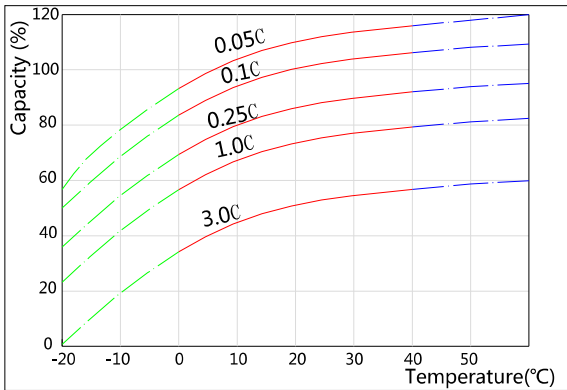
Discharge Characteristics(25°C)



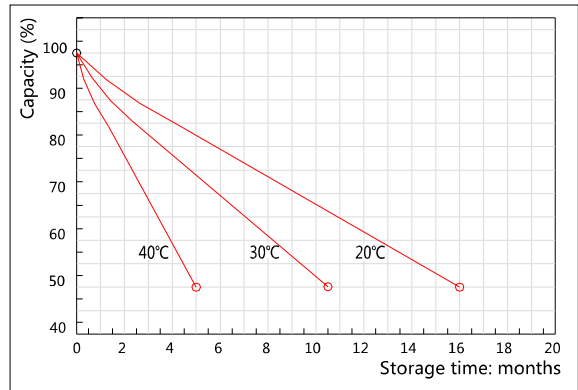
Charging Characteristics(25°C)



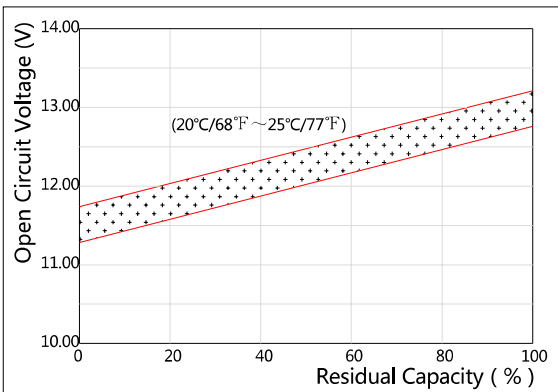
Effect of Temperature on Capacity



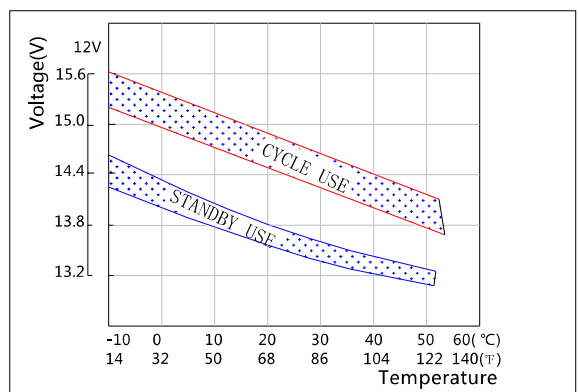
Self-discharge Characteristics



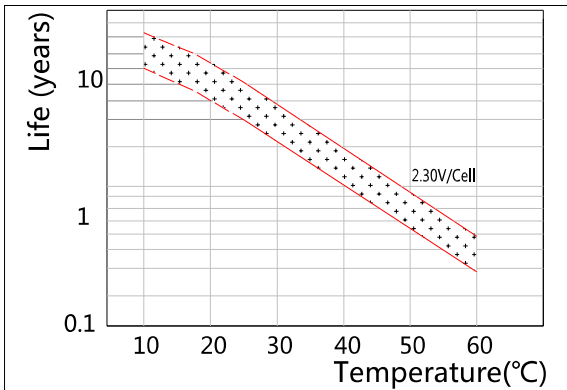
The Relationship for Open Circuit Voltage and Residual Capacity (25°C)



The Relationship for Charging Voltage and Temperature



Floating Life on Temperature



Cycle Life on D.O.D(25°C)

