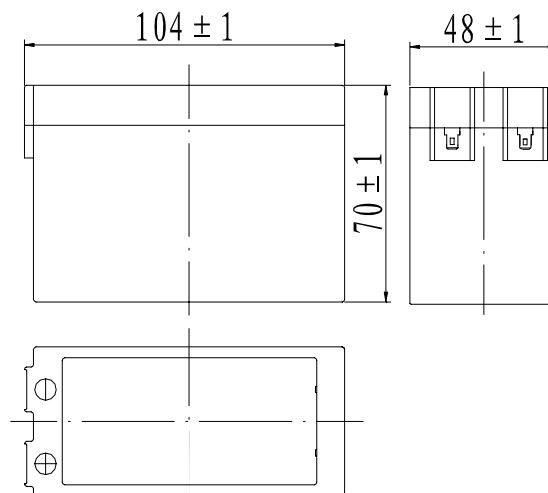


Specifications

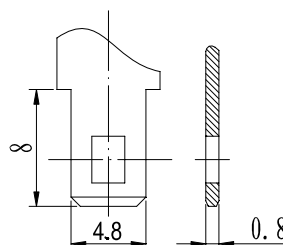
Nominal Voltage		12 V
Capacity (25°C)	20HR(10.5V)	2.5Ah
	10HR(10.5V)	2.3Ah
	1HR(9.60V)	1.63Ah
Dimension	Length	104 ± 1mm (4.09inch)
	Width	48 ± 1mm (1.89inch)
	Height	70 ± 1mm (2.76inch)
	Total Height	70 ± 1mm (2.76inch)
Approx. Weight		0.9kg (1.98lbs) ± 5%
Terminal type		T1
Internal resistance (Fully charged, 25°C)		Approx. 42mΩ
Capacity affected by temperature (20HR)	40°C	102%
	25°C	100%
	0°C	85%
	-15°C	65%
Self-discharge (25°C)	3 month	Remaining Capacity: 91%
	6 month	Remaining Capacity: 82%
	12 month	Remaining Capacity: 65%
Nominal operating temperature		25°C ± 3°C (77°F ± 5°F)
Operating temperature range	Discharge	-15°C ~ 50°C (5°F ~ 122°F)
	Charge	-10°C ~ 50°C (14°F ~ 122°F)
	Storage	-20°C ~ 50°C (-4°F ~ 122°F)
Float charging voltage(25°C)		13.60 to 13.80V Temperature compensation: -18mV/°C
Cyclic charging voltage(25°C)		14.50 to 14.90V Temperature compensation: -30mV/°C
Maximum charging current		0.75A
Terminal material		Copper
Maximum discharge current		37.5A(5 sec.)
Designed floating life(20°C)		10years



Dimensions



Terminal



- ◆ Absorbent glass mat technology;
- ◆ Recognized by UL & CE;
- ◆ ABS container.

Constant Current Discharge Characteristics (A, 25°C)

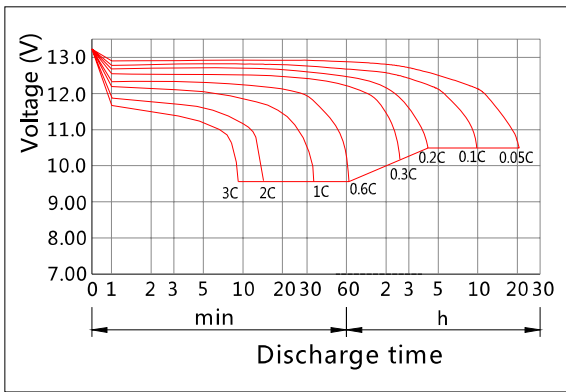
F.V/TIME	5min	10min	15min	30min	60min	2h	3h	4h	5h	10h	20h
9.60V	9.50	6.00	4.75	2.65	1.63	0.89	0.64	0.51	0.43	0.24	0.127
9.90V	9.22	5.82	4.64	2.60	1.60	0.88	0.63	0.51	0.43	0.24	0.126
10.2V	8.84	5.58	4.47	2.52	1.56	0.88	0.63	0.50	0.43	0.23	0.126
10.5V	8.46	5.34	4.31	2.46	1.53	0.86	0.63	0.50	0.43	0.23	0.125
10.8V	7.98	5.04	4.09	2.37	1.48	0.84	0.61	0.49	0.41	0.23	0.123

Constant Power Discharge Characteristics (Watt, 25°C)

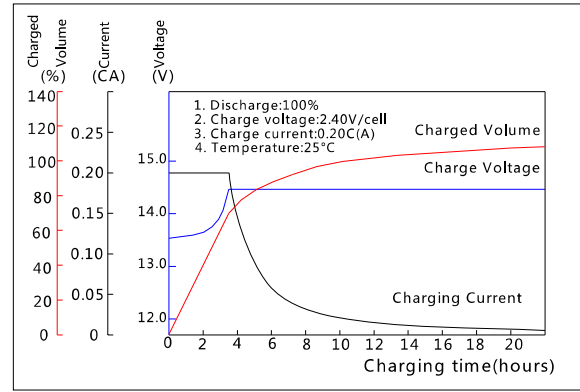
F.V/TIME	5min	10min	15min	30min	60min	2h	3h	4h	5h	10h	20h
9.60V	106	67.7	54.2	30.4	18.8	10.4	7.57	6.07	5.18	2.83	1.52
9.90V	103	65.6	52.9	29.8	18.5	10.3	7.53	6.04	5.15	2.82	1.52
10.2V	98.6	62.9	50.9	28.9	18.1	10.2	7.48	6.00	5.11	2.81	1.51
10.5V	94.4	60.2	49.2	28.2	17.7	10.1	7.43	5.96	5.07	2.79	1.50
10.8V	89.1	56.9	46.6	27.1	17.2	9.83	7.20	5.78	4.92	2.73	1.47

Note: The above characteristics data can be obtained within three charge/discharge cycles.

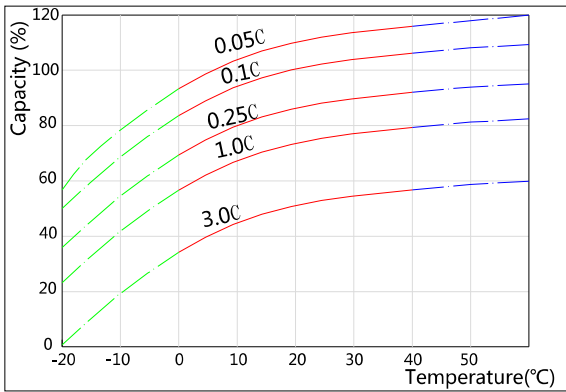
Discharge Characteristics(25°C)



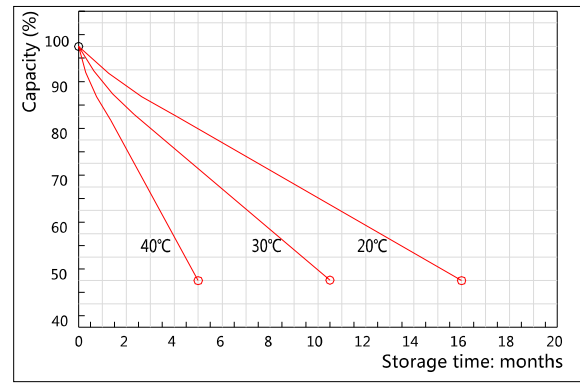
Charging Characteristics(25°C)



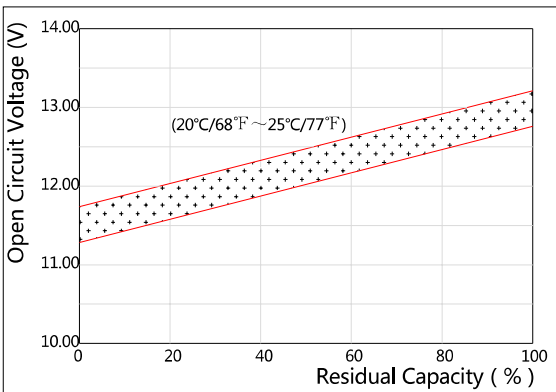
Effect of Temperature on Capacity



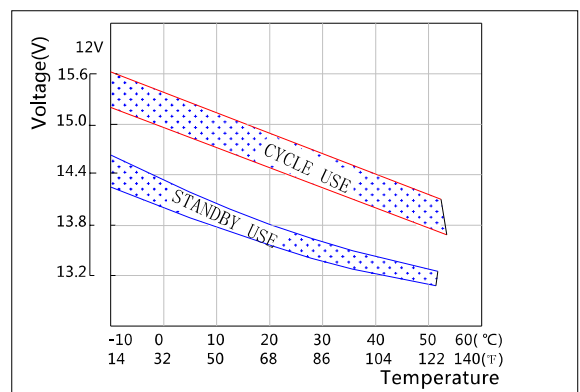
Self-discharge Characteristics



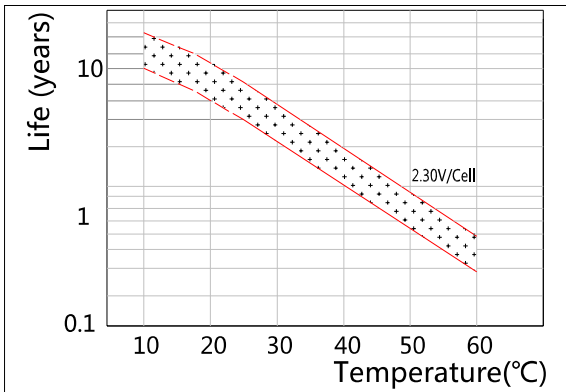
The Relationship for Open Circuit Voltage and Residual Capacity (25°C)



The Relationship for Charging Voltage and Temperature



Floating Life on Temperature



Cycle Life on D.O.D(25°C)

