

Specifications

| | | |
|---|--|-----------------------------|
| Nominal Voltage | | 2 V |
| Capacity (25°C) | 10HR(1.80V) | 400 Ah |
| | 3HR(1.75V) | 306Ah |
| | 1HR(1.60V) | 240Ah |
| Dimension | Length | 210 ± 2mm (8.27inch) |
| | Width | 171 ± 2mm (6.73inch) |
| | Height | 330 ± 2mm (12.99inch) |
| | Total Height | 367 ± 2mm (14.45inch) |
| Approx. Weight | | 26.5kg 58.3lbs) ± 3% |
| Terminal type | | T10 |
| Internal resistance (Fully charged, 25°C) | | Approx. 0.65m Ω |
| Capacity affected by temperature (10HR) | 40°C | 103% |
| | 25°C | 100% |
| | 0°C | 88% |
| | -15°C | 70% |
| Self-discharge (25°C) | 3 month | Remaining Capacity: 94% |
| | 6 month | Remaining Capacity: 88% |
| | 12 month | Remaining Capacity: 75% |
| Nominal operating temperature | | 25°C ± 3°C (77°F ± 5°F) |
| Operating temperature range | Discharge | -15°C ~ 55°C (5°F ~ 131°F) |
| | Charge | -10°C ~ 55°C (14°F ~ 131°F) |
| | Storage | -20°C ~ 55°C (-4°F ~ 131°F) |
| Float charging voltage(25°C) | 2.25 to 2.30V Temperature compensation: -3mV/°C | |
| Cyclic charging voltage(25°C) | 2.35 to 2.40V Temperature compensation: -5mV/°C | |
| Maximum charging current | 80A | |
| Terminal material | Copper | |
| Maximum discharge current | 2000A(5 sec.) | |
| Designed floating life(20°C) | 20 years | |

- ◆ Gelled electrolyte technology;
- ◆ PVC separator;
- ◆ Recognized by UL & CE;
- ◆ ABS container.

Constant Current Discharge Characteristics (A, 25°C)

| F.V/TIME | 30min | 60min | 2h | 3h | 4h | 5h | 6h | 8h | 10h | 20h | 48h | 120h |
|----------|-------|-------|-----|------|------|------|------|------|------|------|------|------|
| 1.60V | 340 | 240 | 147 | 104 | 83.6 | 72.8 | 62.4 | 48.8 | 40.8 | 21.5 | --- | --- |
| 1.65V | 335 | 236 | 145 | 104 | 83.2 | 72.0 | 62.0 | 48.8 | 40.8 | 21.5 | -- | -- |
| 1.70V | 327 | 231 | 144 | 103 | 82.4 | 71.6 | 61.6 | 48.4 | 40.4 | 21.2 | 9.76 | --- |
| 1.75V | 320 | 227 | 143 | 102 | 82.0 | 71.2 | 61.2 | 48.0 | 40.4 | 21.2 | 9.76 | 4.04 |
| 1.80V | 311 | 219 | 139 | 98.8 | 79.6 | 69.2 | 59.2 | 46.4 | 40.0 | 21.1 | 9.68 | 4.00 |

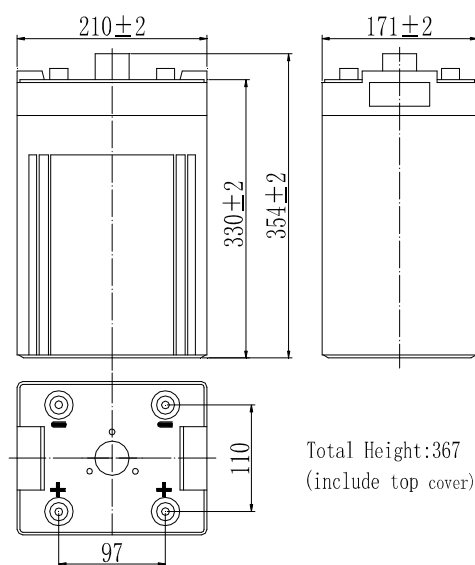
Constant Power Discharge Characteristics (Watt, 25°C)

| F.V/TIME | 30min | 60min | 2h | 3h | 4h | 5h | 6h | 8h | 10h | 20h | 48h | 120h |
|----------|-------|-------|-----|-----|-----|-----|-----|------|------|------|------|------|
| 1.60V | 636 | 456 | 283 | 204 | 164 | 143 | 123 | 97.6 | 81.2 | 42.8 | --- | --- |
| 1.65V | 624 | 448 | 280 | 203 | 163 | 143 | 122 | 96.8 | 80.8 | 42.8 | -- | -- |
| 1.70V | 612 | 436 | 279 | 200 | 163 | 141 | 122 | 96.0 | 80.8 | 42.4 | 19.9 | --- |
| 1.75V | 600 | 428 | 272 | 200 | 161 | 140 | 120 | 95.6 | 80.0 | 42.4 | 19.7 | 8.24 |
| 1.80V | 580 | 416 | 267 | 195 | 156 | 136 | 117 | 92.8 | 79.6 | 42.0 | 19.6 | 8.20 |

Note: The above characteristics data can be obtained within three charge/discharge cycles.

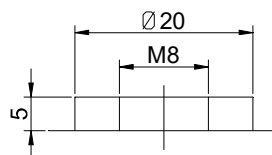


Dimensions



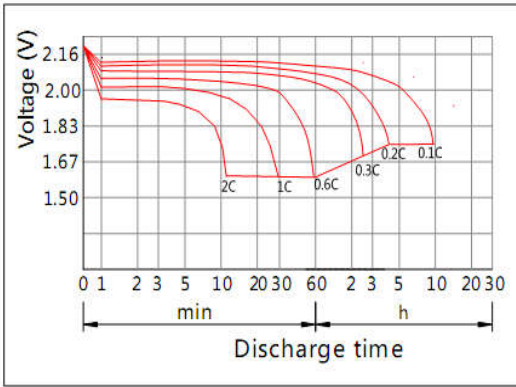
Total Height:367 (include top cover)

Terminal

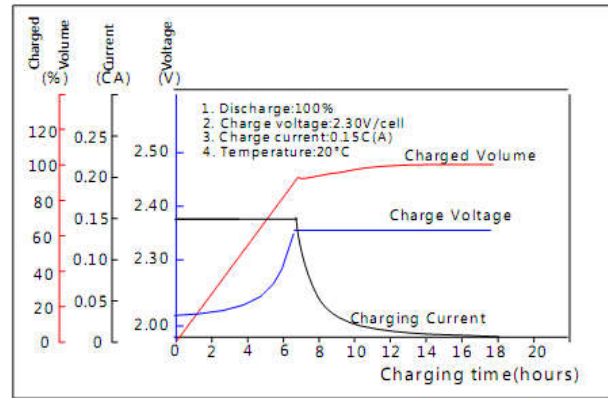


Terminal T10

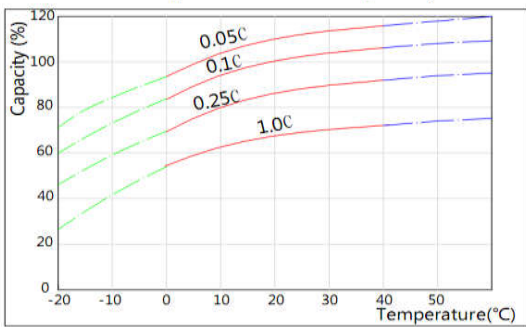
Discharge Characteristics(25°C)



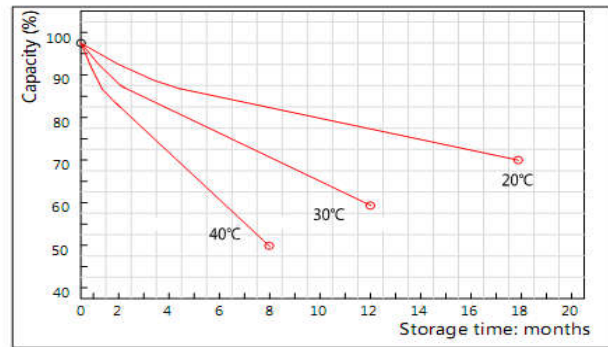
Charging Characteristics(25°C)



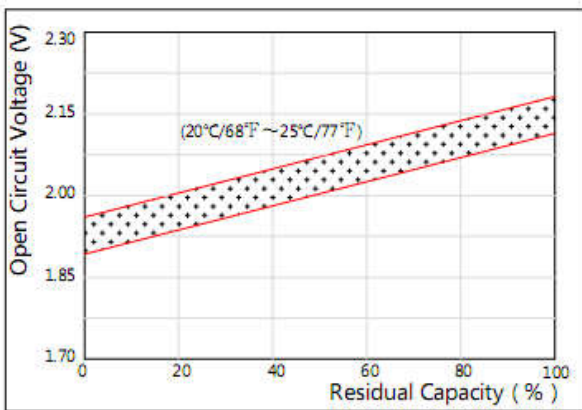
Effect of Temperature on Capacity



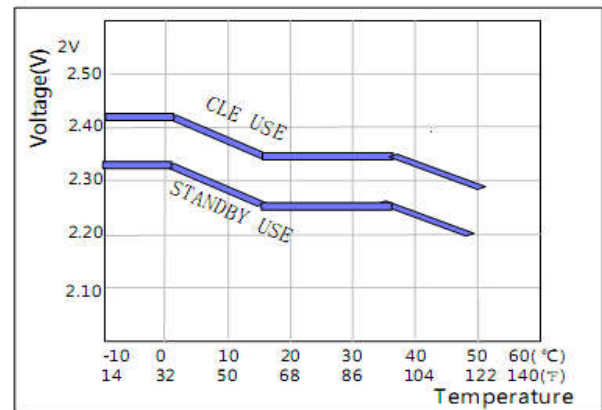
Self-discharge Characteristics



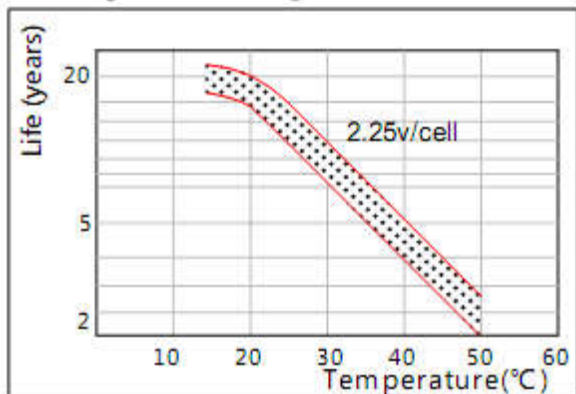
The Relationship for Open Circuit Voltage and Residual Capacity (25°C)



The Relationship for Charging Voltage and Temperature



Floating Life on Temperature



Cycle Life on D.O.D(25°C)

