

**Specifications**

Nominal Voltage		2 V
Capacity (25°C)	10HR(1.80V)	550 Ah
	3HR(1.75V)	420Ah
	1HR(1.75V)	311Ah
Dimension	Length	241 ± 2mm (9.49inch)
	Width	171 ± 2mm (6.73inch)
	Height	330 ± 2mm (12.99inch)
	Total Height	365 ± 2mm (14.37inch)
Approx. Weight		32.5kg (71.7lbs) ± 4%
Terminal type		T10
Internal resistance (Fully charged, 25°C)		Approx. 0.45m Ω
Capacity affected by temperature (10HR)	40°C	102%
	25°C	100%
	0°C	85%
	-15°C	65%
Self-discharge (25°C)	3 month	Remaining Capacity: 91%
	6 month	Remaining Capacity: 82%
	12 month	Remaining Capacity: 65%
Nominal operating temperature		25°C ± 3°C (77°F ± 5°F)
Operating temperature range	Discharge	-15°C ~ 50°C (5°F ~ 122°F)
	Charge	-10°C ~ 50°C (14°F ~ 122°F)
	Storage	-20°C ~ 50°C (-4°F ~ 122°F)
Float charging voltage(25°C)		2.25 to 2.30V Temperature compensation: -3mV/°C
Cyclic charging voltage(25°C)		2.42 to 2.48V Temperature compensation: -5mV/°C
Maximum charging current		110A
Terminal material		Copper
Maximum discharge current		3800A(5 sec.)
Designed floating life(20°C)		20 years

- ◆ Absorbent glass mat technology;
- ◆ Recognized by UL & CE;
- ◆ ABS container.

**Constant Current Discharge Characteristics (A, 25°C)**

F.V/TIME	30min	60min	2h	3h	4h	5h	6h	8h	10h	20h	24h
1.60V	495	330	201	143	115	99.9	85.8	67.3	56.0	29.4	25.5
1.65V	485	325	200	142	114	99.3	85.3	66.9	55.9	29.3	25.4
1.70V	470	317	198	141	114	98.6	84.7	66.5	55.7	29.3	25.4
1.75V	459	311	195	140	113	97.9	84.2	66.0	55.4	29.1	25.2
1.80V	442	301	190	136	109	95.0	81.6	64.0	55.0	28.9	25.0

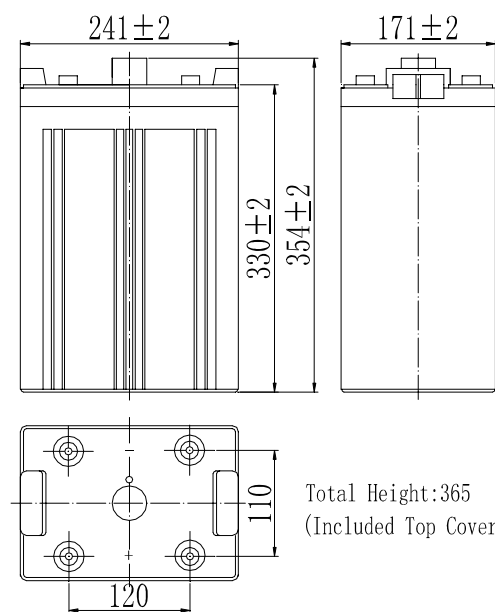
**Constant Power Discharge Characteristics (Watt, 25°C)**

F.V/TIME	30min	60min	2h	3h	4h	5h	6h	8h	10h	20h	24h
1.60V	926	627	388	280	225	197	169	134	111	58.8	51.2
1.65V	907	618	386	279	224	196	168	133	111	58.7	51.1
1.70V	879	602	382	277	223	194	167	132	111	58.5	51.0
1.75V	858	590	376	275	221	193	166	131	110	58.2	50.7
1.80V	827	572	367	267	214	187	161	127	109	57.8	50.3

Note: The above characteristics data can be obtained within three charge/discharge cycles.

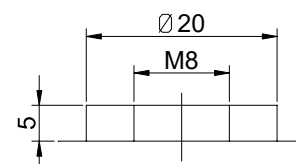


**Dimensions**



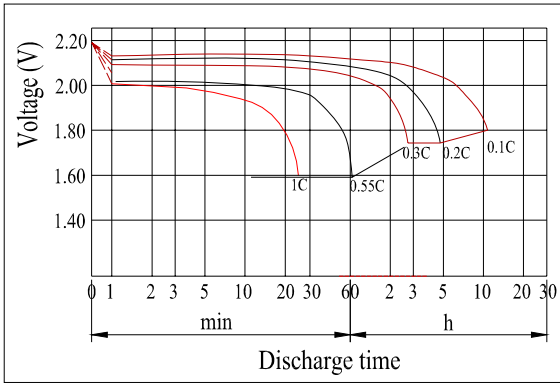
Total Height:365  
(Included Top Cover)

**Terminal**

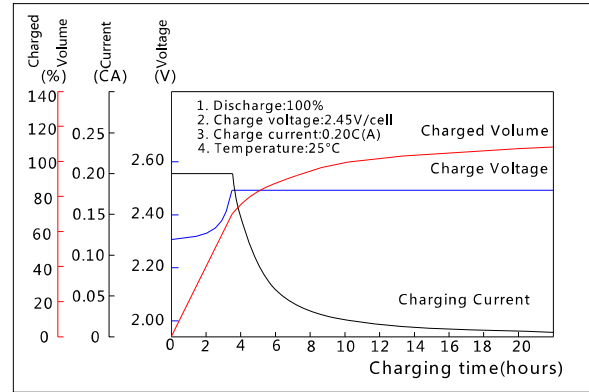


Terminal T10

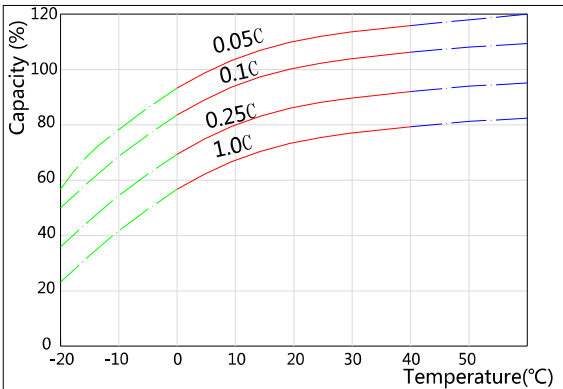
**Discharge Characteristics(25°C)**



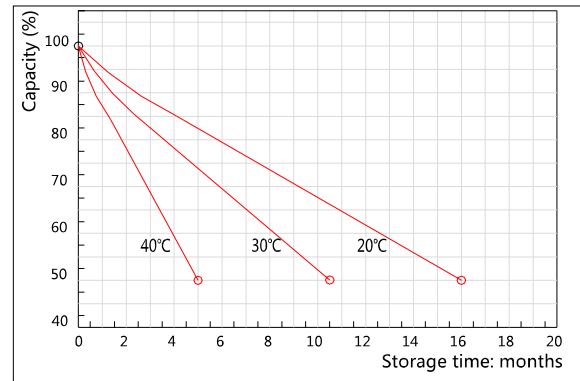
**Charging Characteristics(25°C)**



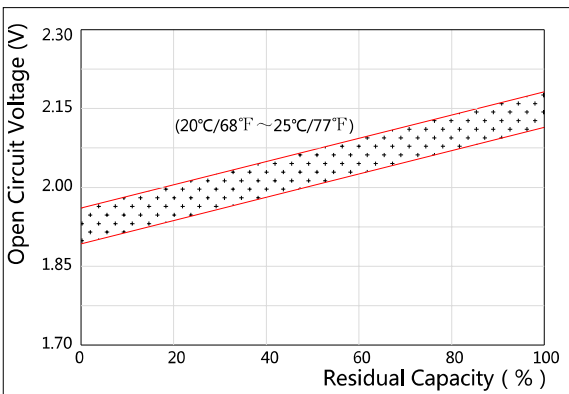
**Effect of Temperature on Capacity**



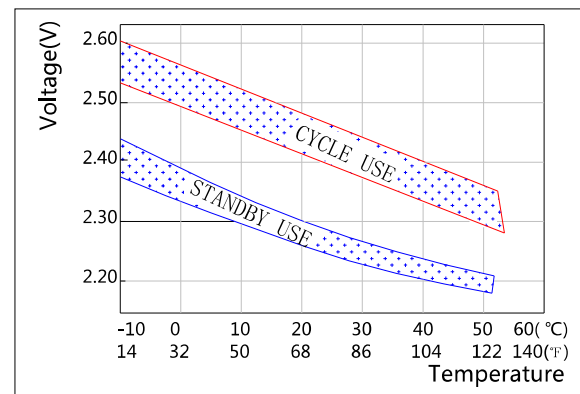
**Self-discharge Characteristics**



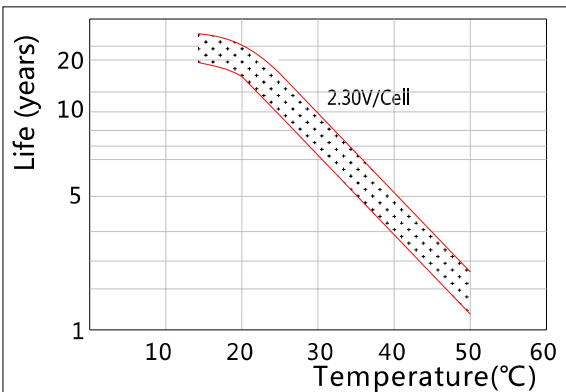
**The Relationship for Open Circuit Voltage and Residual Capacity (25°C)**



**The Relationship for Charging Voltage and Temperature**



**Floating Life on Temperature**



**Cycle Life on D.O.D(25°C)**

