

**Specifications**

Nominal Voltage		2 V
Capacity (25°C)	10HR(1.80V)	500 Ah
	3HR(1.75V)	384Ah
	1HR(1.75V)	282Ah
Dimension	Length	241 ± 2mm (9.49inch)
	Width	171 ± 2mm (6.73inch)
	Height	330 ± 2mm (12.99inch)
	Total Height	365 ± 2mm (14.37inch)
Approx. Weight		29.2kg (64.4lbs) ± 4%
Terminal type		T10
Internal resistance (Fully charged, 25°C)		Approx. 0.5m Ω
Capacity affected by temperature (10HR)	40°C	102%
	25°C	100%
	0°C	85%
	-15°C	65%
Self-discharge (25°C)	3 month	Remaining Capacity: 91%
	6 month	Remaining Capacity: 82%
	12 month	Remaining Capacity: 65%
Nominal operating temperature		25°C ± 3°C (77°F ± 5°F)
Operating temperature range	Discharge	-15°C ~ 50°C (5°F ~ 122°F)
	Charge	-10°C ~ 50°C (14°F ~ 122°F)
	Storage	-20°C ~ 50°C (-4°F ~ 122°F)
Float charging voltage(25°C)	2.25 to 2.30V Temperature compensation: -3mV/°C	
Cyclic charging voltage(25°C)	2.42 to 2.48V Temperature compensation: -5mV/°C	
Maximum charging current	100A	
Terminal material	Copper	
Maximum discharge current	3500A(5 sec.)	
Designed floating life(20°C)	20 years	

- ◆ Absorbent glass mat technology;
- ◆ Recognized by UL & CE;
- ◆ ABS container.

**Constant Current Discharge Characteristics (A, 25°C)**

F.V/TIME	30min	60min	2h	3h	4h	5h	6h	8h	10h	20h	24h
1.60V	450	300	183	130	105	90.8	78.0	61.2	50.9	26.7	23.2
1.65V	441	296	182	129	104	90.2	77.6	60.8	50.8	26.7	23.1
1.70V	428	288	180	128	103	89.6	77.0	60.4	50.7	26.6	23.0
1.75V	417	282	177	128	103	89.0	76.5	60.0	50.4	26.4	22.9
1.80V	402	274	173	124	99.4	86.3	74.2	58.2	50.0	26.3	22.8

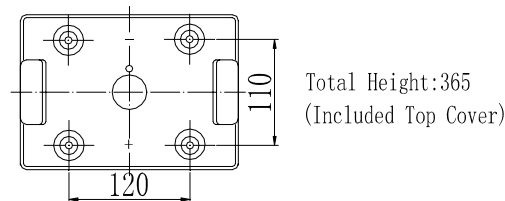
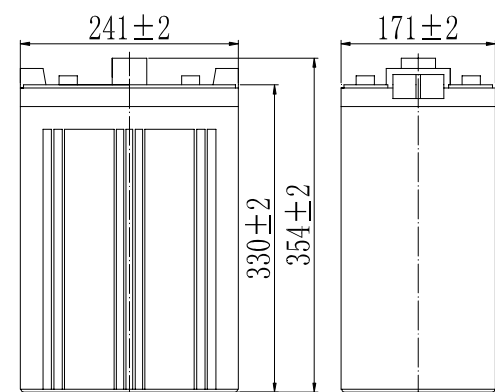
**Constant Power Discharge Characteristics (Watt, 25°C)**

F.V/TIME	30min	60min	2h	3h	4h	5h	6h	8h	10h	20h	24h
1.60V	842	570	353	255	205	179	154	122	101	53.4	46.6
1.65V	825	561	351	253	204	178	153	121	101	53.3	46.5
1.70V	799	547	347	252	202	177	152	120	101	53.2	46.3
1.75V	780	536	342	250	201	175	151	119	100	52.9	46.0
1.80V	751	520	334	242	195	170	146	116	99.5	52.5	45.7

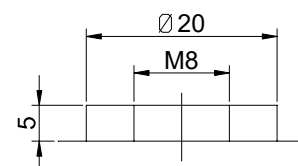
Note: The above characteristics data can be obtained within three charge/discharge cycles.



**Dimensions**

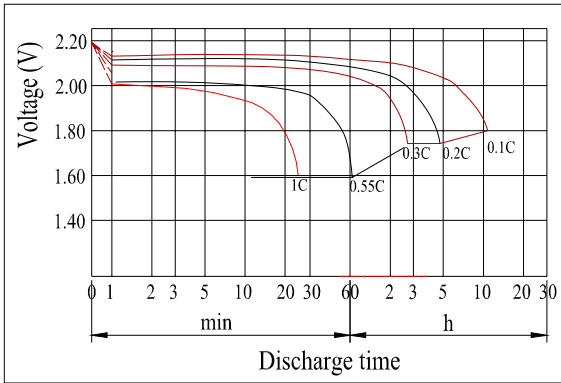


**Terminal**

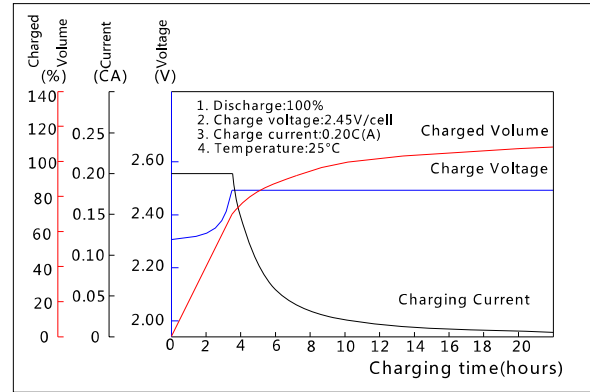


Terminal T10

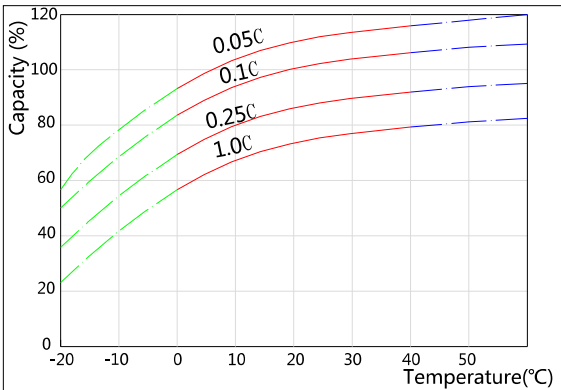
**Discharge Characteristics(25°C)**



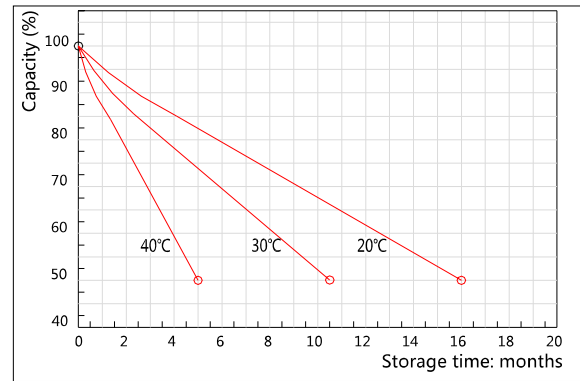
**Charging Characteristics(25°C)**



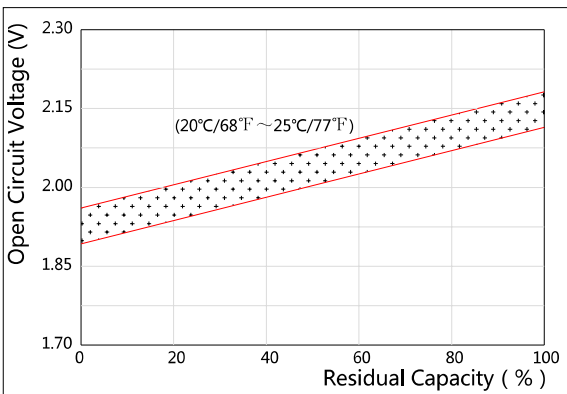
**Effect of Temperature on Capacity**



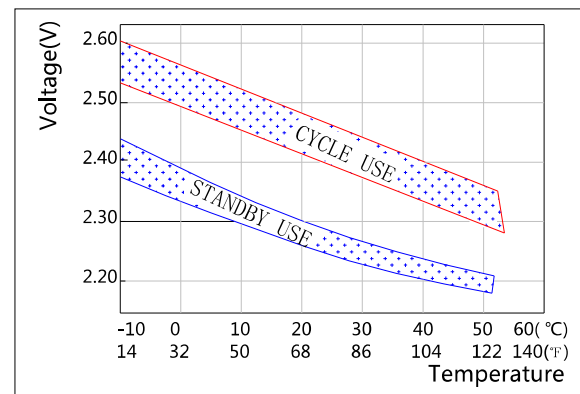
**Self-discharge Characteristics**



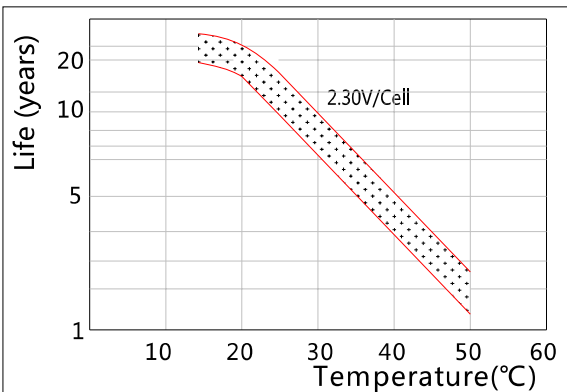
**The Relationship for Open Circuit Voltage and Residual Capacity (25°C)**



**The Relationship for Charging Voltage and Temperature**



**Floating Life on Temperature**



**Cycle Life on D.O.D(25°C)**

