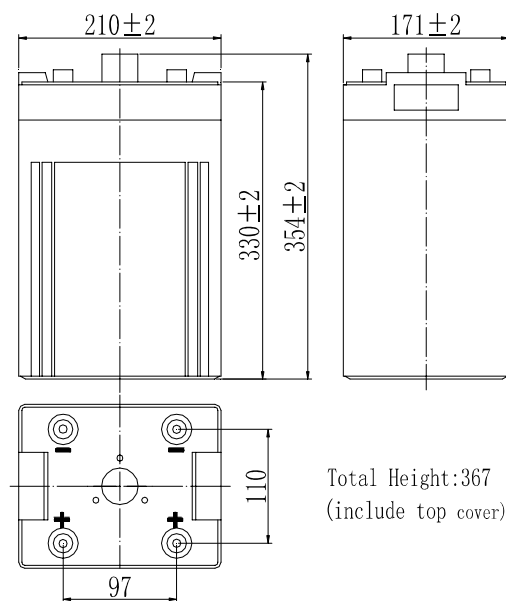


Specifications

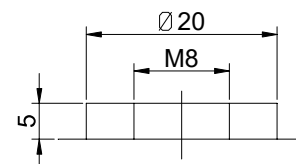
Nominal Voltage		2 V
Capacity (25°C)	10HR(1.80V)	400 Ah
	3HR(1.75V)	306Ah
	1HR(1.75V)	226Ah
Dimension	Length	210 ± 2mm (8.27inch)
	Width	171 ± 2mm (6.73inch)
	Height	330 ± 2mm (12.99inch)
	Total Height	367 ± 2mm (14.45inch)
Approx. Weight		24.2kg (53.3lbs) ± 4%
Terminal type		T10
Internal resistance (Fully charged, 25°C)		Approx. 0.6m Ω
Capacity affected by temperature (10HR)	40°C	102%
	25°C	100%
	0°C	85%
	-15°C	65%
Self-discharge (25°C)	3 month	Remaining Capacity: 91%
	6 month	Remaining Capacity: 82%
	12 month	Remaining Capacity: 65%
Nominal operating temperature		25°C ± 3°C (77°F ± 5°F)
Operating temperature range	Discharge	-15°C ~ 50°C (5°F ~ 122°F)
	Charge	-10°C ~ 50°C (14°F ~ 122°F)
	Storage	-20°C ~ 50°C (-4°F ~ 122°F)
Float charging voltage(25°C)		2.25 to 2.30V Temperature compensation: -3mV/°C
Cyclic charging voltage(25°C)		2.42 to 2.48V Temperature compensation: -5mV/°C
Maximum charging current		80A
Terminal material		Copper
Maximum discharge current		2800A(5 sec.)
Designed floating life(20°C)		20 years



Dimensions



Terminal



Terminal T10

- ◆ Absorbent glass mat technology;
- ◆ Recognized by UL & CE;
- ◆ ABS container.

Constant Current Discharge Characteristics (A, 25°C)

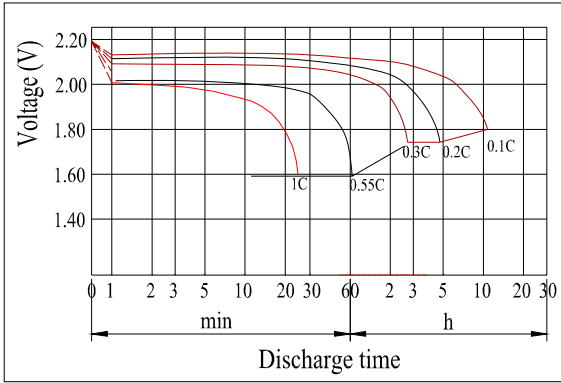
F.V/TIME	30min	60min	2h	3h	4h	5h	6h	8h	10h	20h	24h
1.60V	360	240	146	104	83.6	72.6	62.4	49.0	40.7	21.4	18.5
1.65V	353	236	145	103	83.1	72.2	62.1	48.7	40.6	21.3	18.5
1.70V	342	230	144	103	82.6	71.7	61.6	48.3	40.5	21.3	18.4
1.75V	334	226	142	102	82.0	71.2	61.2	48.0	40.3	21.1	18.3
1.80V	321	219	138	98.9	79.5	69.1	59.4	46.6	40.0	21.0	18.2

Constant Power Discharge Characteristics (Watt, 25°C)

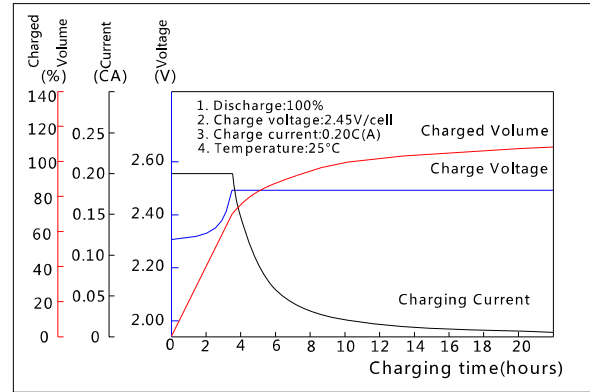
F.V/TIME	30min	60min	2h	3h	4h	5h	6h	8h	10h	20h	24h
1.60V	673	456	282	204	164	143	123	97.4	81.0	42.8	37.2
1.65V	660	449	280	203	163	142	122	96.9	80.9	42.7	37.2
1.70V	640	438	278	201	162	141	121	96.2	80.6	42.5	37.1
1.75V	624	429	274	200	161	140	121	95.5	80.2	42.3	36.8
1.80V	601	416	267	194	156	136	117	92.7	79.6	42.0	36.6

Note: The above characteristics data can be obtained within three charge/discharge cycles.

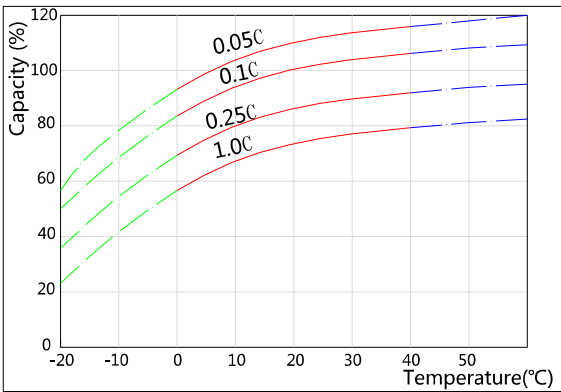
Discharge Characteristics(25°C)



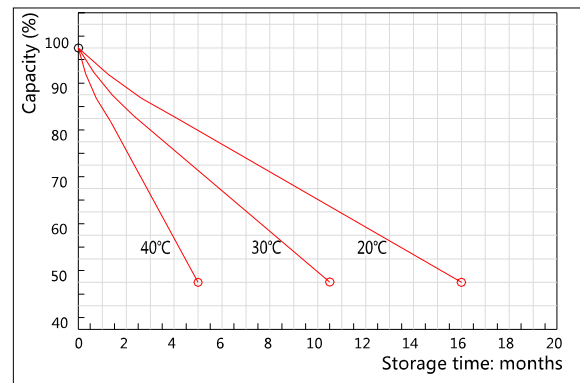
Charging Characteristics(25°C)



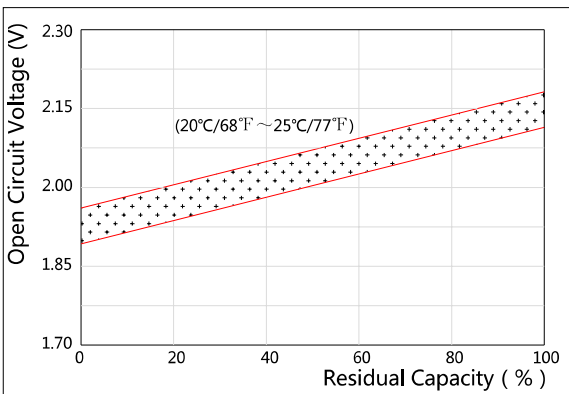
Effect of Temperature on Capacity



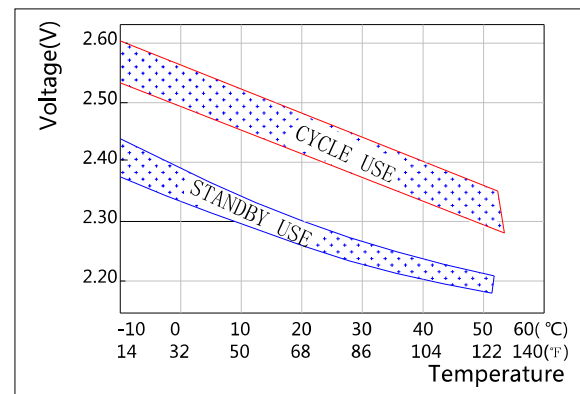
Self-discharge Characteristics



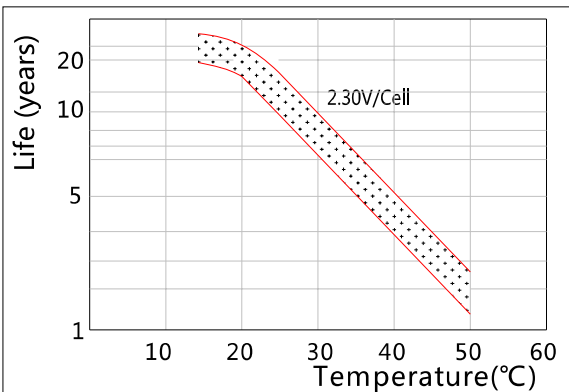
The Relationship for Open Circuit Voltage and Residual Capacity (25°C)



The Relationship for Charging Voltage and Temperature



Floating Life on Temperature



Cycle Life on D.O.D(25°C)

