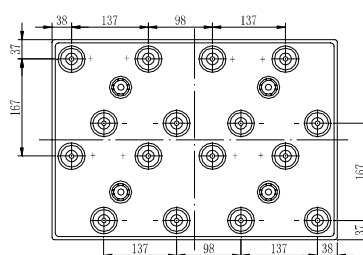
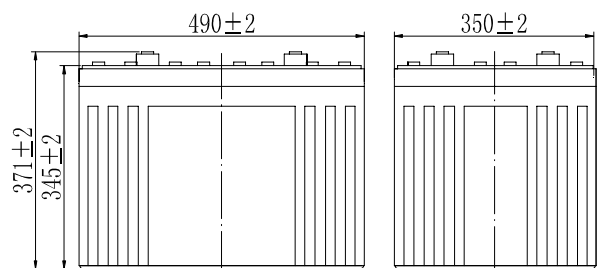


**Specifications**

Nominal Voltage		2 V
Capacity (25°C)	10HR(1.80V)	2000 Ah
	3HR(1.75V)	1530Ah
	1HR(1.75V)	1129Ah
Dimension	Length	490±2mm (19.29inch)
	Width	350±2mm (13.78inch)
	Height	345±2mm (13.58inch)
	Total Height	382±3mm (15.04inch)
Approx. Weight		120kg (264.5lbs) ±3%
Terminal type		T10
Internal resistance (Fully charged, 25°C)		Approx. 0.18m Ω
Capacity affected by temperature (10HR)	40°C	102%
	25°C	100%
	0°C	85%
	-15°C	65%
Self-discharge (25°C)	3 month	Remaining Capacity: 91%
	6 month	Remaining Capacity: 82%
	12 month	Remaining Capacity: 65%
Nominal operating temperature		25°C ±3°C (77°F ±5°F)
Operating temperature range	Discharge	-15°C ~ 50°C (5°F ~ 122°F)
	Charge	-10°C ~ 50°C (14°F ~ 122°F)
	Storage	-20°C ~ 50°C (-4°F ~ 122°F)
Float charging voltage(25°C)		2.25 to 2.30V Temperature compensation: -3mV/°C
Cyclic charging voltage(25°C)		2.42 to 2.48V Temperature compensation: -5mV/°C
Maximum charging current		400A
Terminal material		Copper
Maximum discharge current		11000A(5 sec.)
Designed floating life(20°C)		20 years

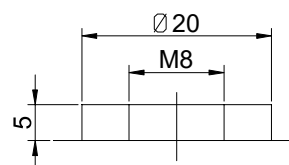


**Dimensions**



Total Height: 382 (include top cover)

**Terminal**



Terminal T10

- ◆ Absorbent glass mat technology;
- ◆ Recognized by UL & CE;
- ◆ ABS container.

**Constant Current Discharge Characteristics (A, 25°C)**

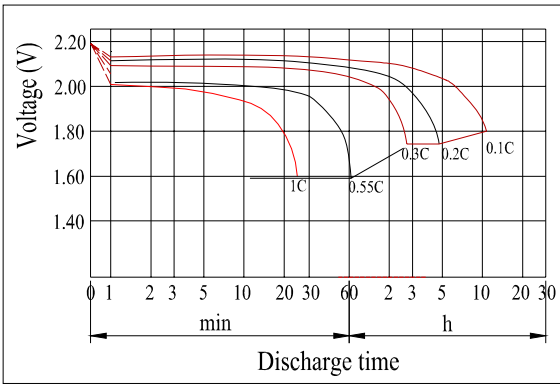
F.V/TIME	30min	60min	2h	3h	4h	5h	6h	8h	10h	20h	24h
1.60V	1800	1200	731	520	418	363	312	245	204	107	92.6
1.65V	1764	1182	726	517	416	361	310	243	203	107	92.5
1.70V	1710	1152	720	514	413	358	308	242	203	106	92.2
1.75V	1669	1129	709	510	410	356	306	240	201	106	91.6
1.80V	1607	1094	691	495	398	345	297	233	200	105	91.0

**Constant Power Discharge Characteristics (Watt, 25°C)**

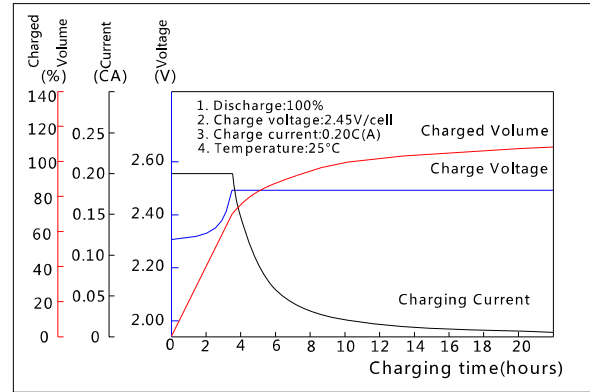
F.V/TIME	30min	60min	2h	3h	4h	5h	6h	8h	10h	20h	24h
1.60V	3366	2280	1410	1020	820	715	615	487	405	214	186
1.65V	3299	2246	1402	1014	815	711	611	484	404	213	186
1.70V	3198	2189	1390	1007	809	706	607	481	403	213	185
1.75V	3120	2145	1369	1000	804	701	603	478	401	211	184
1.80V	3006	2079	1334	970	779	680	585	463	398	210	183

Note: The above characteristics data can be obtained within three charge/discharge cycles.

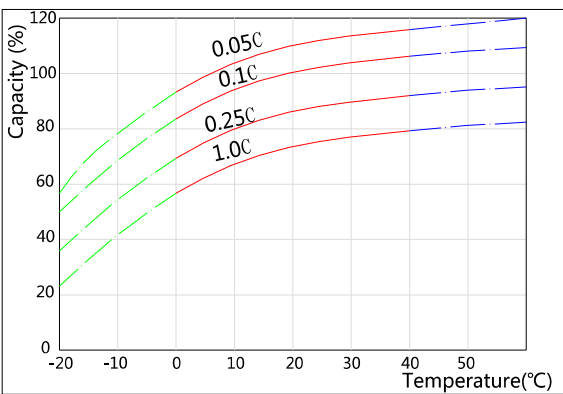
**Discharge Characteristics(25°C)**



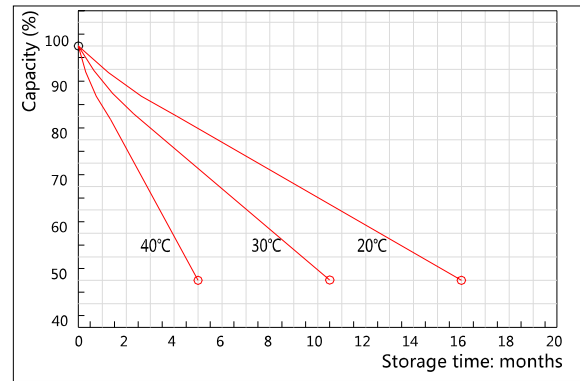
**Charging Characteristics(25°C)**



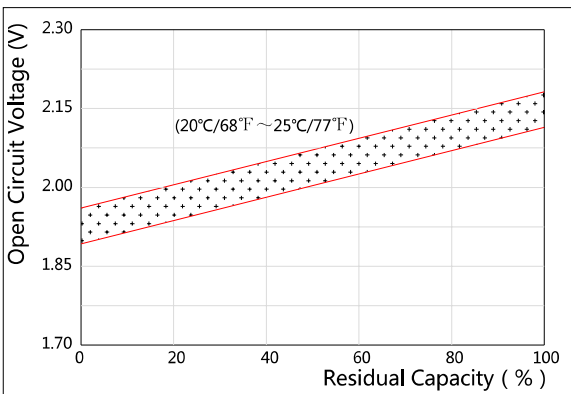
**Effect of Temperature on Capacity**



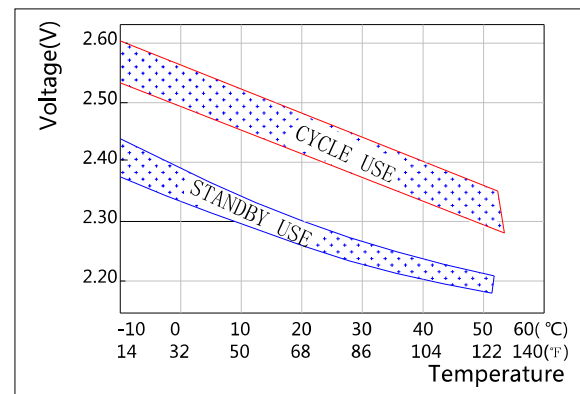
**Self-discharge Characteristics**



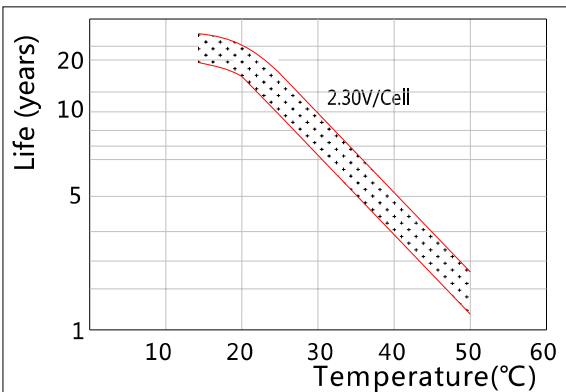
**The Relationship for Open Circuit Voltage and Residual Capacity (25°C)**



**The Relationship for Charging Voltage and Temperature**



**Floating Life on Temperature**



**Cycle Life on D.O.D(25°C)**

